

KEYNOTES	
0301	CAST-IN PLACE CONCRETE RAMP
0311	CONCRETE TILT-PANEL WALL
0321	LINE OF CONCRETE FLOOR CLOSURE POUR
0322	CONCRETE CONTROL JOINT
0323	CONCRETE EXPANSION JOINT
0324	CONCRETE SLAB ON A.B.C. WITH STEEL TROWEL FINISH AND DENSIFYING SEALER. LOCATE SAW-CUT CONTROL JOINTS AT QUARTER POINTS AND CONCRETE EXPANSION JOINTS AT COLUMN GRID LINES.
0332	KNOCK OUT
0501	STEEL EGRESS/ACCESS STAIR - PAINTED
0508	CONCRETE FILLED 6" DIA. STEEL PIPE BOLLARD - PAINTED
0511	STEEL COLUMNS PER STRUCTURAL. PAINT COLUMNS 'SAFETY YELLOW' TO 12 A.F.F., AND PAINT WHITE ABOVE 12 A.F.F. TO ROOF DECK
0812	INSULATED HOLLOW METAL DOOR - PAINTED
0816	PRE-FINISHED VERTICAL LIFT OVERHEAD SECTIONAL DOOR
0817	PRE-FINISHED VERTICAL LIFT DRIVE-IN OVERHEAD SECTIONAL DOOR
0901	PAINT INTERIOR FACE OF TILT-PANEL WHITE FOR FULL HEIGHT
2202	DOWNSPOUT AND SUFFPER BOX

GENERAL FLOOR PLAN NOTES	
A.	ALL WORK SHALL BE PERFORMED IN ACCORDANCE WITH ALL APPLICABLE CODES, REGULATIONS AND ORDINANCES HAVING JURISDICTION.
B.	SEE STRUCTURAL, MECHANICAL, ELECTRICAL, AND PLUMBING DOCUMENTS FOR ADDITIONAL INFORMATION AND COORDINATION.
C.	CONTRACTOR IS RESPONSIBLE FOR EXAMINING ALL CONTRACT DOCUMENTS, FIELD CONDITIONS AND CONFIRMING THAT WORK IS BUILDABLE AS SHOWN BEFORE PROCEEDING WITH CONSTRUCTION. IF THERE ARE ANY QUESTIONS REGARDING THESE OR OTHER COORDINATION QUESTIONS, THE CONTRACTOR IS RESPONSIBLE FOR OBTAINING CLARIFICATION BEFORE PROCEEDING WITH WORK IN QUESTION.
D.	'TYPICAL' (TYP) AS USED IN THESE DOCUMENTS SHALL MEAN THAT THE CONDITION IS THE SAME OR REPRESENTATIVE FOR ALL SIMILAR CONDITIONS THROUGHOUT, U.N.O.
E.	DIMENSIONS AT INTERIOR STUD WALLS ARE TO FACE OF STUD, U.N.O.
F.	DO NOT SCALE DRAWINGS. DIMENSIONS GOVERN IN ALL INSTANCES.
G.	SEE ENLARGED PLANS AND ELEVATIONS FOR ADDITIONAL DIMENSIONS, NOTES AND DETAIL INDICATIONS.
H.	ALL INTERIOR GYP. BOARD SURFACES TO BE PAINTED. COORDINATE COLOR SELECTION WITH ARCHITECT IF COLOR IS NOT SPECIFIED
I.	GYP. BOARD WALL FINISHES SHALL EXTEND TO UNDERSIDE OF DECK AT ALL OPEN TO DECK AREAS.
J.	SEE STRUCTURAL FOR STUD SCHEDULE FOR MINIMUM GAUGE, SIZE AND SPACING.
K.	SURFACE MOUNTED FIRE EXTINGUISHERS TYPE 2A-10BC TO BE INSTALLED AT A MAX. 75'-0" TRAVEL DISTANCE, PER FIRE EXTINGUISHER AND A MAXIMUM OF 14'-6" A.F.F. TO TOP OF EXTINGUISHER.
L.	CONSTRUCT ALL RATED WALLS IN COMPLIANCE WITH U.L. STANDARDS.
M.	ALL PRODUCTS LISTED BY ESR/MFR. NUMBERS SHALL BE INSTALLED PER THE REPORT AND MFR. WRITTEN INSTRUCTIONS. PRODUCT SUBSTITUTIONS FOR PRODUCTS LISTED SHALL ALSO HAVE I.C.B.O. APPROVED EVALUATION REPORT, OR BE APPROVED AND LISTED BY OTHER NATIONALLY RECOGNIZED TESTING AGENCIES.
N.	ALL GLASS AND GLAZING SHALL COMPLY WITH LOCAL BUILDING CODES AND ALL APPLICABLE SAFETY REGULATIONS.
O.	FLOORS/LANDINGS AT DOORS NOT TO EXCEED 1/2" ELEVATION CHANGE.
P.	MAINTAIN MIN. 48" CLEAR UNOBSTRUCTED EMERGENCY EXIT AISLE TOWARD DESIGNATED EXIT.
Q.	SEE STRUCTURAL FOUNDATION PLAN FOR ALL CONSTRUCTION JOINTS AT CONCRETE SLAB.
R.	ALL EXITS TO BE OPERABLE FROM THE INSIDE WITHOUT THE USE OF A KEY OR SPECIAL KNOWLEDGE. MANUALLY OPERATED EDGE OR SURFACE MOUNTED FLUSH BOLTS ARE PROHIBITED ON EXIT DOORS.
S.	COORDINATE KNOX BOX LOCATION PER LOCAL CODES.
T.	THE BUILDING SHALL BE FULLY SPRINKLED THROUGHOUT WITH AN APPROVED AUTOMATIC FIRE PROTECTION SYSTEM.

KEY PLAN

1 PARTIAL FLOOR PLAN - WEST
SCALE: 1" = 30'-0"

Project No.: 19116.450
Issue Date: 01/25/2024
Drawn By: EN
Project Manager: TR
Title: PARTIAL FLOOR PLAN

Butler Design Group Inc.
architects & planners

5013 East Washington St. #100
Phoenix, Arizona 85034
Phone 602-957-1800

PRELIMINARY
NOT FOR
CONSTRUCTION

OWNERSHIP OF INSTRUMENTS OF SERVICE
All reports, plans, and documents prepared by the design professional are the property of the design professional and shall remain the property of the design professional. The design professional shall retain all copyright, literary and other reserved rights, including the copyright therein.

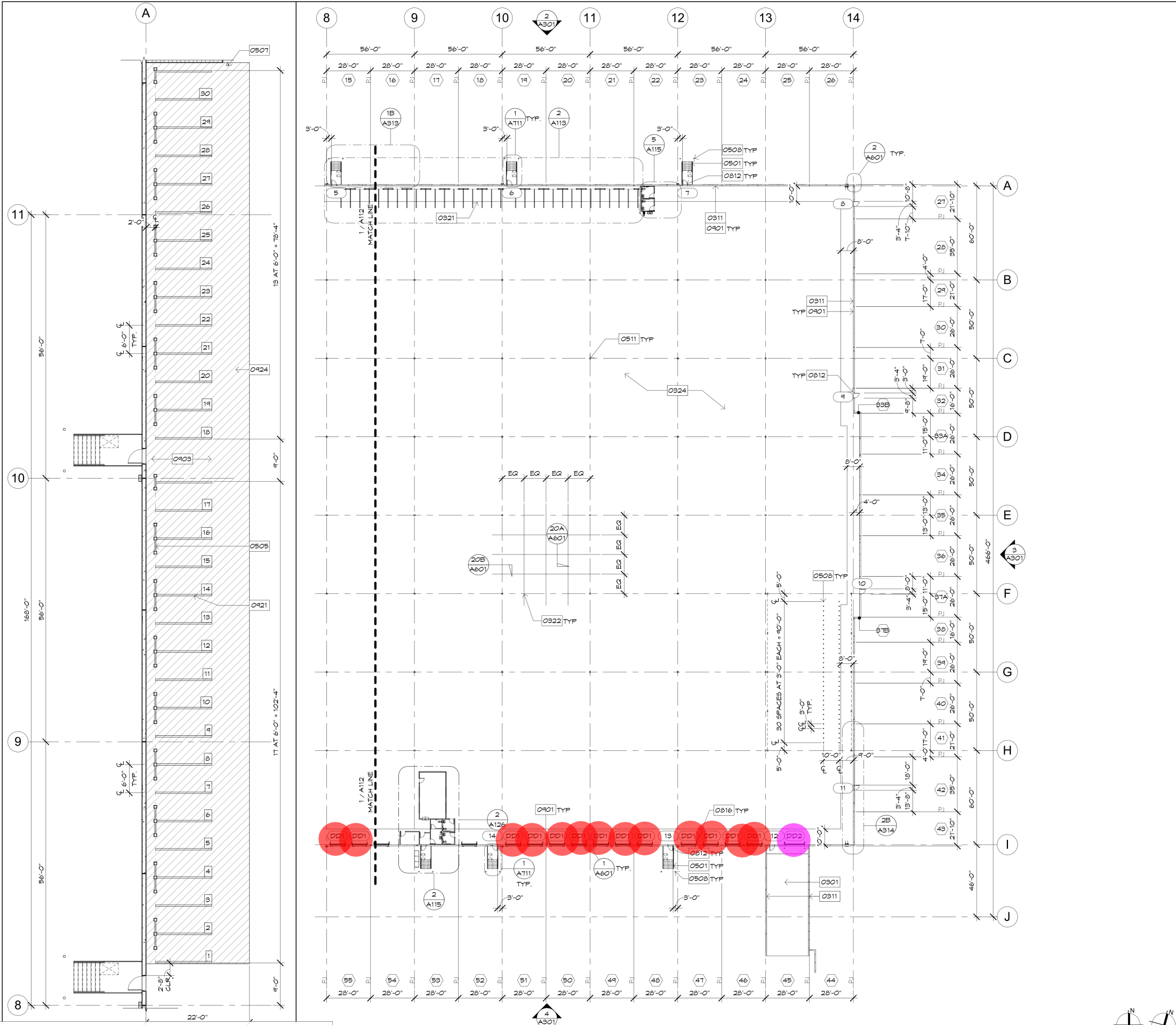
**CLARIUS
PARTNERS**

LAKIN INDUSTRIAL PARK
PHASE 4
GOODYEAR, ARIZONA

Current Submittal: BID SET
Revisions: 01/25/24

Project No.: 19116.450
Issue Date: 01/25/2024
Drawn By: EN
Project Manager: TR
Title: PARTIAL FLOOR PLAN

A112



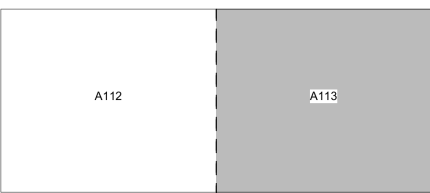
KEYNOTES

- 0301 CAST-IN PLACE CONCRETE RAMP
- 0311 CONCRETE TILT-PANEL WALL
- 0321 LINE OF CONCRETE FLOOR CLOSURE POUR
- 0322 CONCRETE CONTROL JOINT
- 0324 CONCRETE SLAB ON A.B.C. WITH STEEL TROWEL FINISH AND DENSIFYING SEALER. LOCATE SAW-CUT CONTROL JOINTS AT QUARTER POINTS AND CONCRETE EXPANSION JOINTS AT COLUMN GRID LINES.
- 0501 STEEL EGRESS/ACCESS STAIR - PAINTED
- 0505 42" HIGH GUARD RAIL, VERIFY LOCATION WITH TENANT PRIOR TO INSTALL
- 0507 ULINE 42" HIGH SAFETY BOLLARDS, VERIFY LOCATION WITH TENANT PRIOR TO INSTALL
- 0508 CONCRETE FILLED 6" DIA. STEEL PIPE BOLLARD - PAINTED
- 0511 STEEL COLUMNS PER STRUCTURAL. PAINT COLUMNS 'SAFETY YELLOW' TO 12' A.F.F., AND PAINT WHITE ABOVE 12' A.F.F. TO ROOF DECK
- 0812 INSULATED HOLLOW METAL DOOR - PAINTED
- 0816 PRE-FINISHED VERTICAL LIFT OVERHEAD SECTIONAL DOOR
- 0901 PAINT INTERIOR FACE OF TILT-PANEL WHITE FOR FULL HEIGHT
- 0903 ACCESS AISLE FOR EGRESS
- 0921 4" YELLOW PAINT STRIPE, TYP.
- 0924 EPOXY FLOOR COATING

GENERAL FLOOR PLAN NOTES

- A. ALL WORK SHALL BE PERFORMED IN ACCORDANCE WITH ALL APPLICABLE CODES, REGULATIONS AND ORDINANCES HAVING JURISDICTION.
- B. SEE STRUCTURAL, MECHANICAL, ELECTRICAL, AND PLUMBING DOCUMENTS FOR ADDITIONAL INFORMATION AND COORDINATION.
- C. CONTRACTOR IS RESPONSIBLE FOR EXAMINING ALL CONTRACT DOCUMENTS, FIELD CONDITIONS AND CONFIRMING THAT WORK IS BUILDABLE AS SHOWN BEFORE PROCEEDING WITH CONSTRUCTION. IF THERE ARE ANY QUESTIONS REGARDING THESE OR OTHER COORDINATION QUESTIONS, THE CONTRACTOR IS RESPONSIBLE FOR OBTAINING CLARIFICATION BEFORE PROCEEDING WITH WORK IN QUESTION.
- D. 'TYPICAL' (TYP) AS USED IN THESE DOCUMENTS SHALL MEAN THAT THE CONDITION IS THE SAME OR REPRESENTATIVE FOR ALL SIMILAR CONDITIONS THROUGHOUT, U.N.O.
- E. DIMENSIONS AT INTERIOR STUD WALLS ARE TO FACE OF STUD, U.N.O.
- F. DO NOT SCALE DRAWINGS. DIMENSIONS GOVERN IN ALL INSTANCES.
- G. SEE ENLARGED PLANS AND ELEVATIONS FOR ADDITIONAL DIMENSIONS, NOTES AND DETAIL INDICATIONS.
- H. ALL INTERIOR GYP. BOARD SURFACES TO BE PAINTED. COORDINATE COLOR SELECTION WITH ARCHITECT IF COLOR IS NOT SPECIFIED
- I. GYP. BOARD WALL FINISHES SHALL EXTEND TO UNDERSIDE OF DECK AT ALL OPEN TO DECK AREAS.
- J. SEE STRUCTURAL FOR STUD SCHEDULE FOR MINIMUM GAUGE, SIZE AND SPACING.
- K. SURFACE MOUNTED FIRE EXTINGUISHERS TYPE 2A-10BC TO BE INSTALLED AT A MAX. 75'-0" TRAVEL DISTANCE, PER FIRE EXTINGUISHER AND A MAXIMUM OF 4'-6" A.F.F. TO TOP OF EXTINGUISHER.
- L. CONSTRUCT ALL RATED WALLS IN COMPLIANCE WITH U.L. STANDARDS.
- M. ALL PRODUCTS LISTED BY ESR/MFR. NUMBERS SHALL BE INSTALLED PER THE REPORT AND MFR. WRITTEN INSTRUCTIONS. PRODUCT SUBSTITUTIONS FOR PRODUCTS LISTED SHALL ALSO HAVE I.C.B.O. APPROVED EVALUATION REPORT, OR BE APPROVED AND LISTED BY OTHER NATIONALLY RECOGNIZED TESTING AGENCIES.
- N. ALL GLASS AND GLAZING SHALL COMPLY WITH LOCAL BUILDING CODES AND ALL APPLICABLE SAFETY REGULATIONS.
- O. FLOORS/LANDINGS AT DOORS NOT TO EXCEED 1/2" ELEVATION CHANGE.
- P. MAINTAIN MIN. 48" CLEAR UNOBSTRUCTED EMERGENCY EXIT AISLE TOWARD DESIGNATED EXIT.
- Q. SEE STRUCTURAL FOUNDATION PLAN FOR ALL CONSTRUCTION JOINTS AT CONCRETE SLAB.
- R. ALL EXITS TO BE OPERABLE FROM THE INSIDE WITHOUT THE USE OF A KEY OR SPECIAL KNOWLEDGE. MANUALLY OPERATED EDGE OR SURFACE MOUNTED FLUSH BOLTS ARE PROHIBITED ON EXIT DOORS.
- S. COORDINATE KNOX BOX LOCATION PER LOCAL CODES.
- T. THE BUILDING SHALL BE FULLY SPRINKLED THROUGHOUT WITH AN APPROVED AUTOMATIC FIRE PROTECTION SYSTEM.

KEY PLAN



Butler Design Group Inc.
architects & planners

5013 East Washington St. #100
Phoenix, Arizona 85034
Phone 602-957-1800



OWNERSHIP OF INSTRUMENTS OF SERVICE
All reports, plans, and drawings, including this, and all data, notes and other documents prepared by the design professional or as consultants and/or their staff remain the property of the design professional. The design professional shall retain all copyright law, liability and other reserved rights, including the copyright therein.



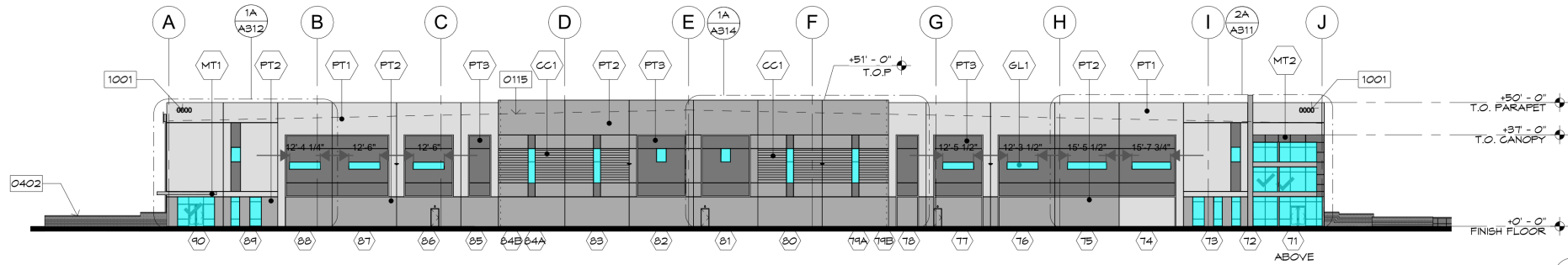
LAKIN INDUSTRIAL PARK
PHASE 4
GOODYEAR, ARIZONA

Current Submittal: BID SET
Revisions: 01/25/24

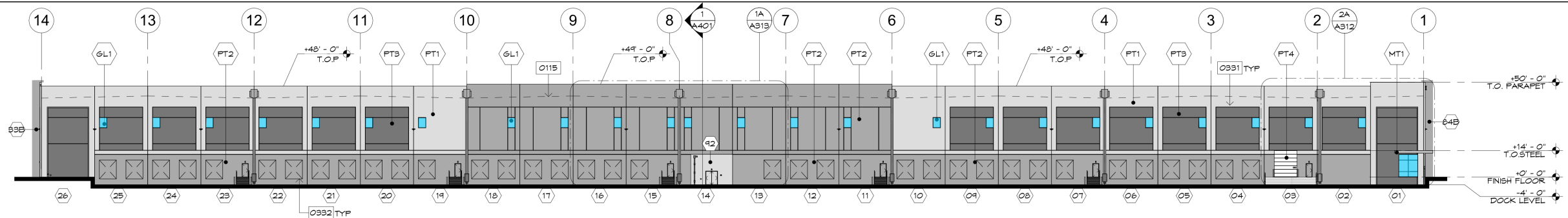
Project No.: 19116.450
Issue Date: 01/25/2024
Drawn By: EN
Project Manager: TR
Title: PARTIAL FLOOR PLAN

A113

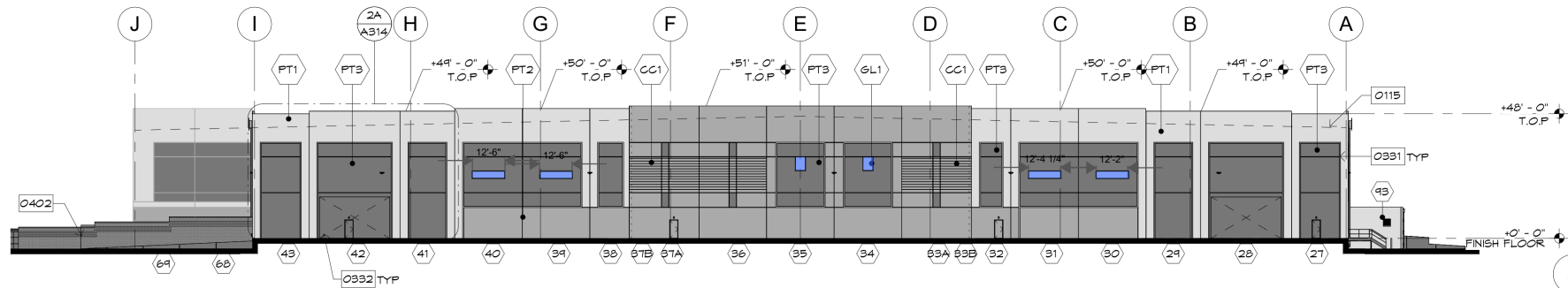
1 PARTIAL FLOOR PLAN - EAST
SCALE: 1" = 30'-0"



1 WEST ELEVATION
SCALE: 1" = 30'-0"

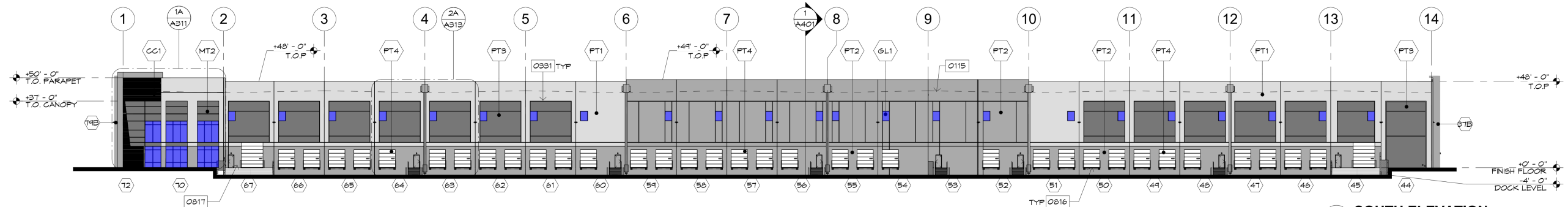


2 NORTH ELEVATION
SCALE: 1" = 30'-0"



3 EAST ELEVATION

SCALE: 1" = 30'-0"






4 SOUTH ELEVATION
SCALE: 1" = 30'-0"

GENERAL ELEVATION NOTES

- A. SEE ENLARGED ELEVATIONS, DETAILS, AND WALL SECTIONS FOR ADDITIONAL INFORMATION IN RELATIONSHIP TO EXTERIOR CONDITIONS.
- B. GRADES AT PERIMETER OF BUILDING ARE TO BE COORDINATED WITH THE CIVIL DOCUMENTS FOR ACTUAL FINISH GRADE LOCATIONS.
- C. TOP OF PARAPET IS BASED ON ELEVATIONS ABOVE FINISHED FLOOR.
- D. SEE DOOR AND WINDOW SCHEDULES AND ELEVATIONS FOR ADDITIONAL INFORMATION IN RELATIONSHIP TO TYPE AND STYLE.
- E. ALL DIMENSIONS SHOWN FOR LOCATIONS OF FINISH OF EXTERIOR ELEMENTS ARE TO BE COORDINATED WITH ARCHITECTURAL FLOOR PLANS, DETAILS, AND SECTIONS.
- F. REFER TO WINDOW TYPES FOR TEMPERED GLASS LOCATIONS.

- J. SEE SITE PLAN AND HARDSCAPE PLANS FOR ADDITIONAL ALIGNMENT ITEMS IN RELATIONSHIP TO THE BUILDING TO SITE RELATED HORIZONTAL CONTROL.
- K. SIGNAGE BY OTHERS, TO BE PERMITTED BY OTHERS. PROVIDE ELECTRICAL AS REQUIRED.
- L. ALL EXPOSED METAL PLATES AND EXPOSED FLASHING ARE TO BE PAINTED TO MATCH ADJACENT BUILDING COLOR, UNLESS NOTED OTHERWISE.
- M. ALL SITE EQUIPMENT SHALL BE PAINTED TO MATCH ADJACENT BUILDING, SITE WALL.
- N. WHEN TWO DISSIMILAR MATERIALS ABUT, JOINT SEALANT TO BE COLOR MATCHED TO THE MATERIAL IN THE SAME PLANE AS THE SEALANT.
- O. ALL ARCHITECTURALLY EXPOSED STRUCTURAL STEEL (AESS) TO BE FREE OF ~~WELDING~~ SURFACE MARKS AND IMPERFECTIONS.

- | | | |
|-----------|---|--|
| 1/2 SQ FT |  | 5 TO BE CONTINUOUS OR OF EQUAL LENGTH AND GROUND SMOOTH. BONDO FILLER MAY BE REQUIRED SOME LOCATIONS. COORDINATE WITH ARCHITECT FOR LOCATIONS. |
| 1/2 SQ FT |  | ED STEEL ELEMENTS, IF NECESSARY, TO BE CONTINUOUS TH |
| 1/2 SQ FT |  | NT SEALANT TO BE USED AT PANEL JOINTS. COLOR TO PANEL. |

KEY NOTES

- 0115 DASHED LINE OF ROOF BEYOND
0331 REVEAL AT CONCRETE TILT-PANEL
0332 KNOCK OUT
0402 CMU TRUCK COURT SCREEN WALL. COURSING AND FINISH PER ELEVATIONS
0816 PRE-FINISHED VERTICAL LIFT OVERHEAD SECTIONAL DOOR
0817 PRE-FINISHED VERTICAL LIFT DRIVE-IN OVERHEAD SECTIONAL DOOR
1001 BUILDING ADDRESS LOCATION

MATERIAL FINISH SCHEDULE

MARK	DESCRIPTION	COLOR / FINISH	MODEL	MANUFACTURER	COMMENTS
BOARD	FORM				
CC1	BOARDFORM FORMLINER TEXTURE	CONCRETE BOARD FORM	TBD	FITZGERALD FORMLINERS	
GLAZING					
GL1	LOW-E GLASS	CLEAR	TBD	TBD	
METAL					
MT1	STEEL CANOPY	ZINK GRAY	--	--	
MT2	ACM	CLEAR ANODIZED	TBD	TBD	
PAINT					
PT1	EXT. PAINTED TILT	CLOUD	DEG191	DUNN EDWARDS	
PT2	EXT. PAINTED TILT	INDUSTRIAL AGE	DET618	DUNN EDWARDS	
PT3	EXT. PAINTED TILT	PIKE LAKE	DE6320	DUNN EDWARDS	
PT4	FACTORY FINISH O.H.D. (WHITE)	OVER HEAD DOOR	T.B.D.	T.B.D.	

West Elevation Glazi...	1667.8 SQ FT
North Elevation Glazing	607.5 SQ FT
East Elevation Glazing	178.7 SQ FT
South Elevation Gla...	1233.8 SQ FT

5. TO BE CONTINUOUS OR OF EQUAL LENGTH AND GROUND SMOOTH. BOND-O FILLER MAY BE REQUIRED SOME LOCATIONS. COORDINATE WITH ARCHITECT FOR DETAILS.

6. ED STEEL ELEMENTS, IF NECESSARY, TO BE CONTINUOUS THROUGH PANELS.

7. JOINT SEALANT TO BE USED AT PANEL JOINTS. COLOR TO MATCH PANEL.



Butler Design Group Inc.
architects & planners

5013 East Washington St. #100
Phoenix, Arizona 85034
Phone 602-957-1800

PRELIMINARY
NOT FOR
CONSTRUCTION

OWNERSHIP OF INSTRUMENTS OF SERVICE
All graphic, plan, and elevation drawings, including this, and all data, notes and
other documents and instruments prepared by the design professional
as evidenced by the seal remain the property of the design professional.
Professional: The design professional shall retain all common law,
statutory and other reserved rights, including the copyright therein.



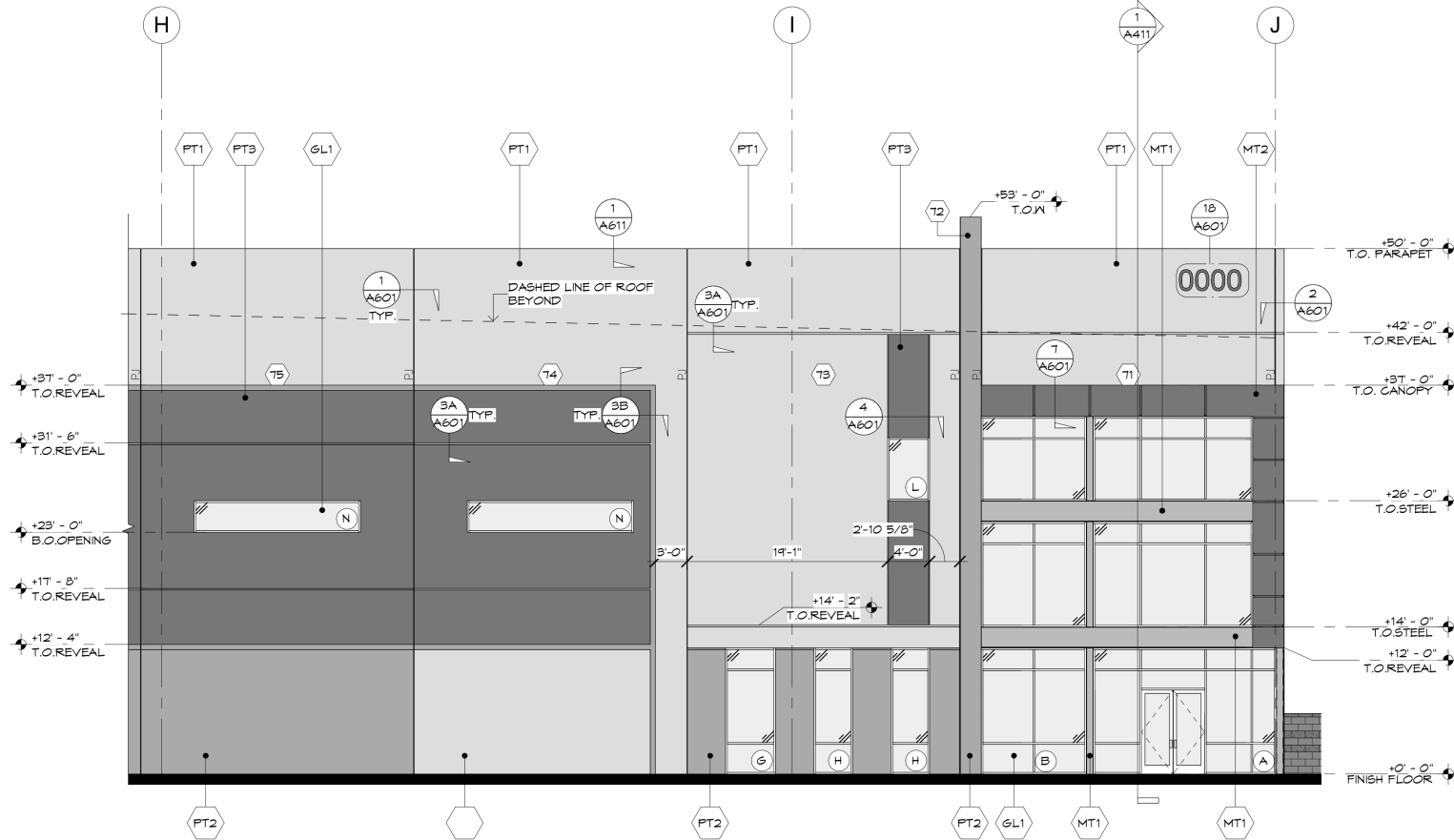
LAKIN INDUSTRIAL PARK
PHASE 4
GOODYEAR, ARIZONA

Current Submittal: BID SET
01/25/24

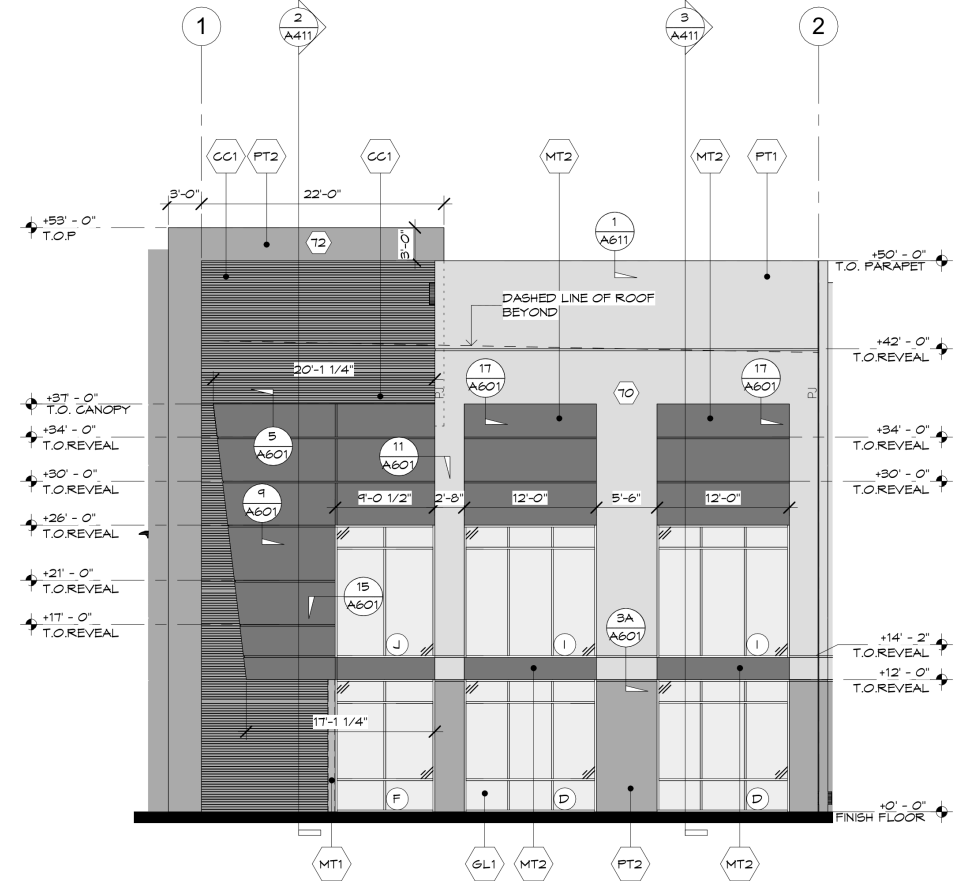
Revisions:

Project No.: 19116.450
Issue Date: 01/25/2024
Drawn By: EN | KD
Project Manager: TR
Title: ENLARGED ELEVATIONS

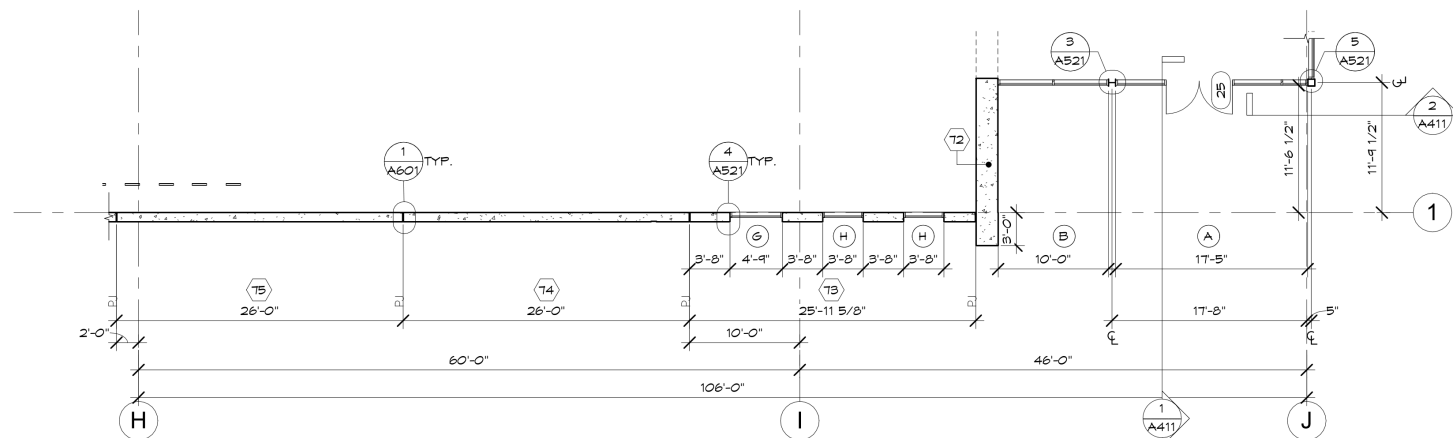
A311



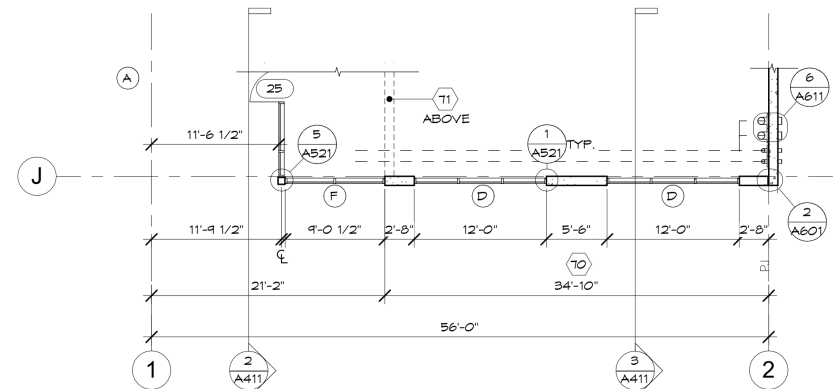
2A ENLARGED WEST ELEVATION
SCALE: 1/8" = 1'-0"



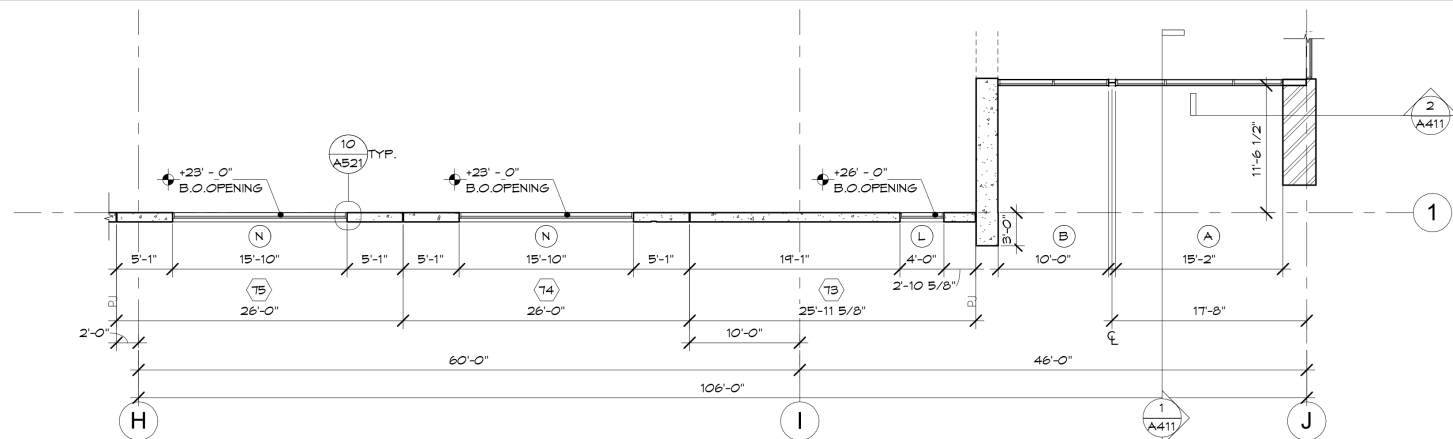
1A ENLARGED SOUTH ELEVATION
SCALE: 1/8" = 1'-0"



2B ENLARGED FLOOR PLAN
SCALE: 1/8" = 1'-0"



1B ENLARGED FLOOR PLAN
SCALE: 1/8" = 1'-0"



2C ENLARGED UPPER PLAN
SCALE: 1/8" = 1'-0"



Butler Design Group Inc.
architects & planners

5013 East Washington St. #100
Phoenix, Arizona 85034
Phone 602-957-1800

PRELIMINARY
NOT FOR
CONSTRUCTION

OWNERSHIP OF INSTRUMENTS OF SERVICE
All graphic, plans, and drawings, including this, and all data, notes and
other documents and instruments prepared by the design professional
as evidenced by the seal remain the property of the design professional.
The design professional shall retain all common law,
statutory and other reserved rights, including the copyright therein.

CLARIUS
PARTNERS

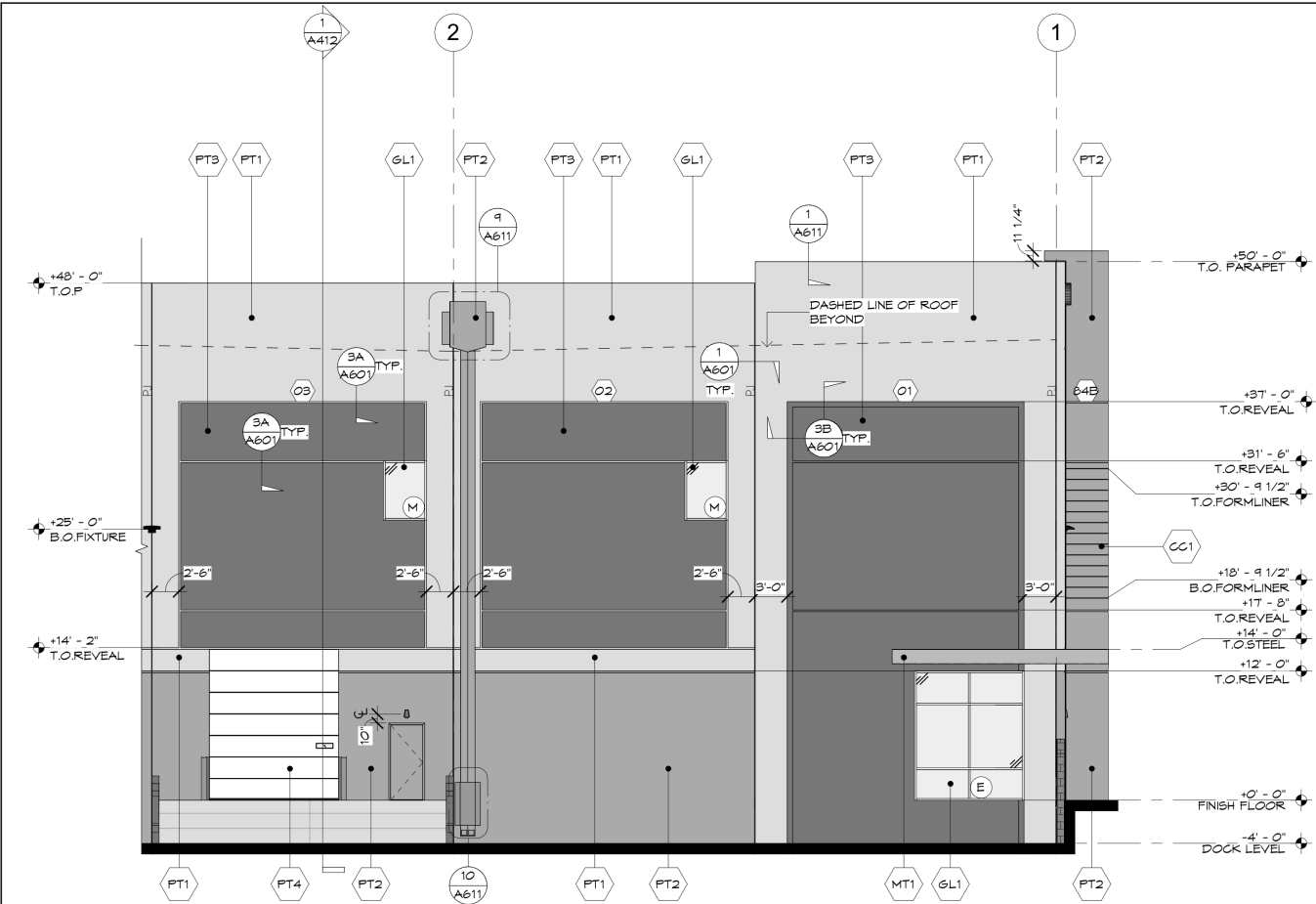
LAKIN INDUSTRIAL PARK
PHASE 4
GOODYEAR, ARIZONA

Current Submittal: BID SET
01/25/24

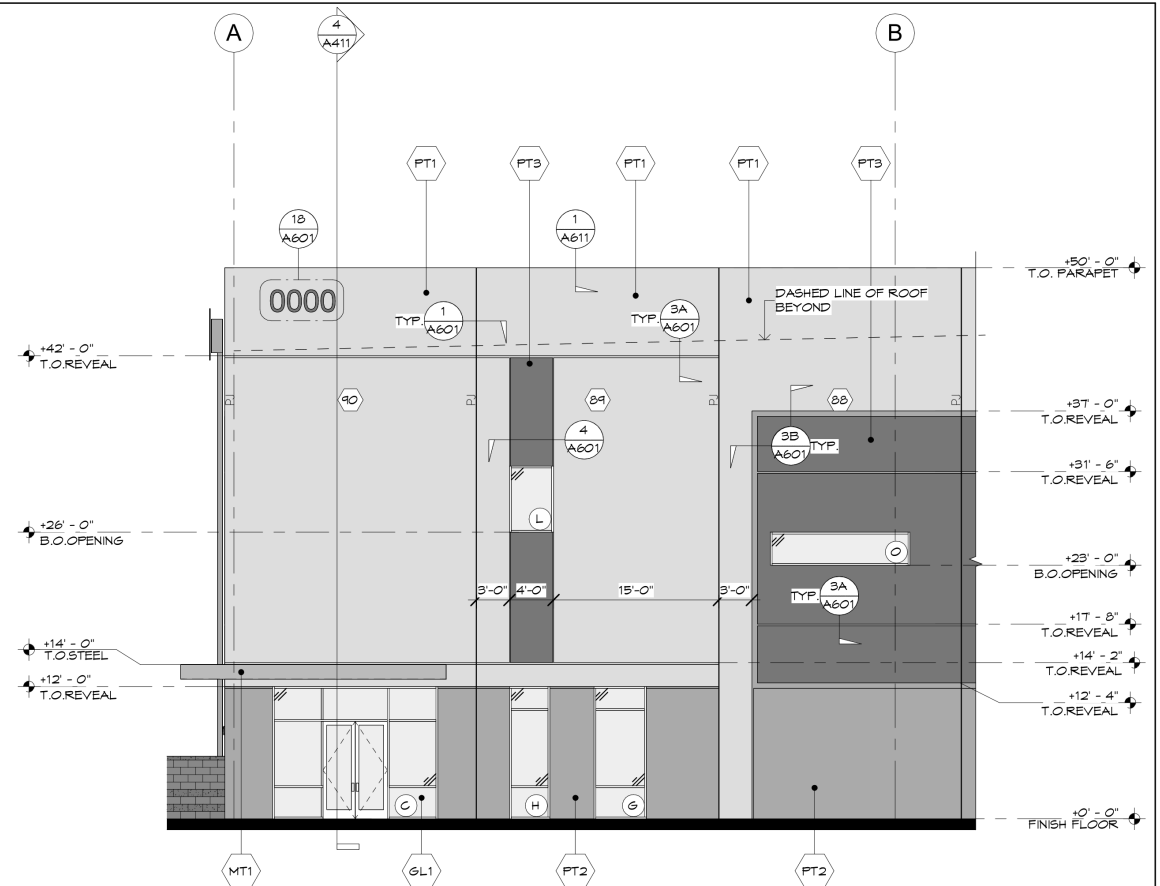
Revisions:

Project No.: 19116.450
Issue Date: 01/25/2024
Drawn By: EN | KD
Project Manager: TR
Title: ENLARGED ELEVATIONS

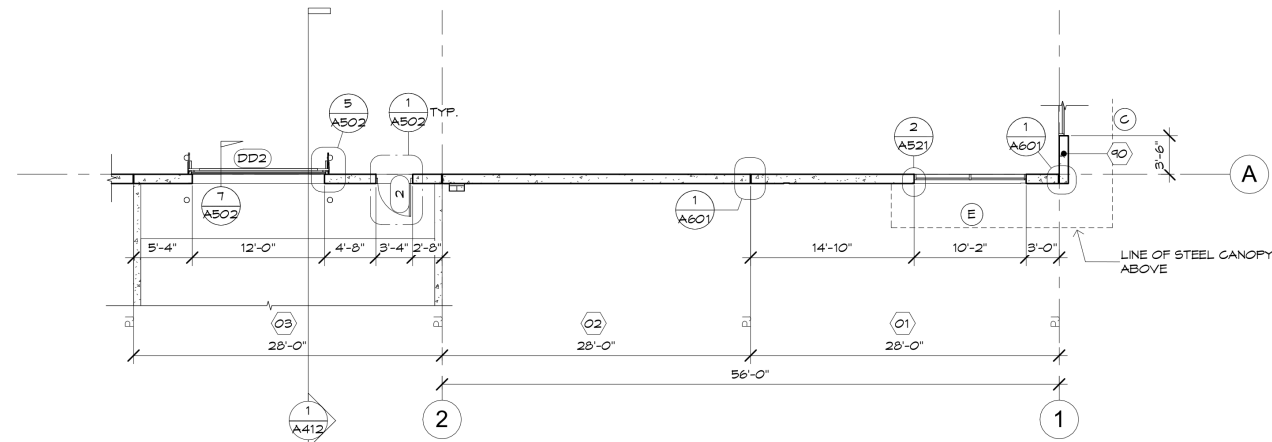
A312



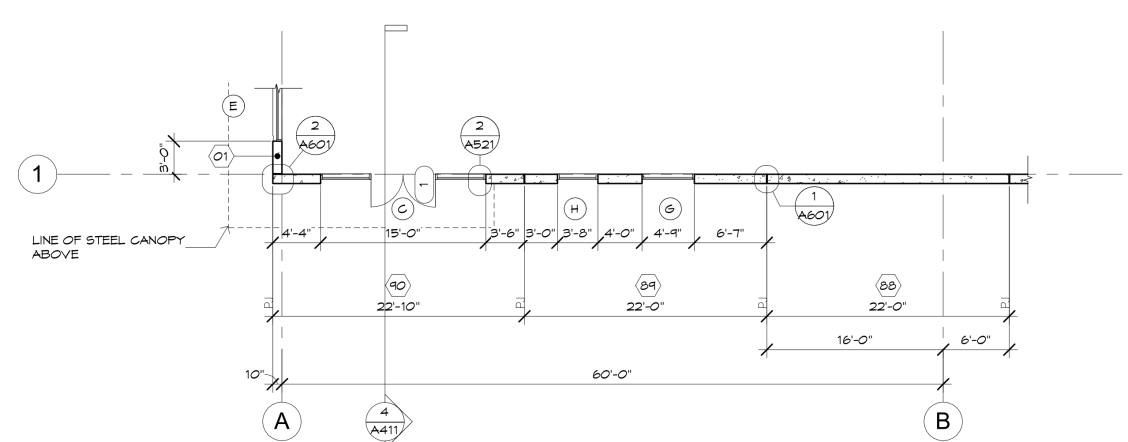
2A ENLARGED NORTH ELEVATION
SCALE: 1/8" = 1'-0"



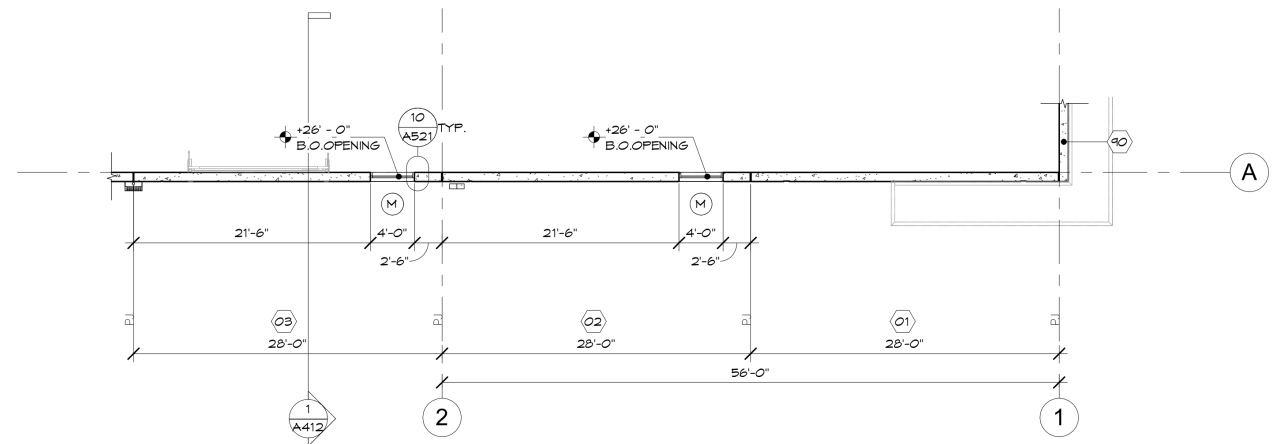
1A ENLARGED WEST ELEVATION
SCALE: 1/8" = 1'-0"



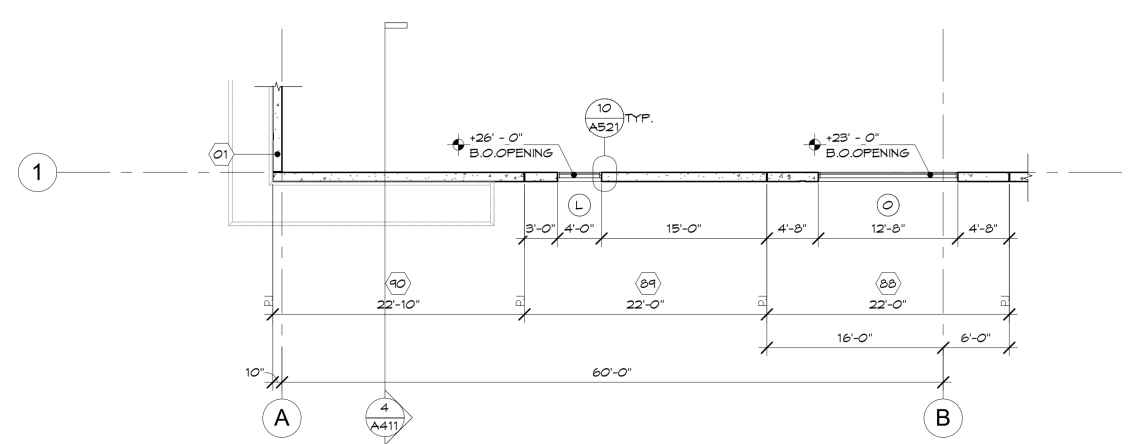
2B ENLARGED FLOOR PLAN
SCALE: 1/8" = 1'-0"



1B ENLARGED FLOOR PLAN
SCALE: 1/8" = 1'-0"



2C ENLARGED UPPER PLAN
SCALE: 1/8" = 1'-0"



1C ENLARGED UPPER PLAN
SCALE: 1/8" = 1'-0"



Butler Design Group Inc.
architects & planners

5013 East Washington St. #100
Phoenix, Arizona 85034
Phone 602-957-1800

PRELIMINARY
NOT FOR
CONSTRUCTION

OWNERSHIP OF INSTRUMENTS OF SERVICE
All reports, plans, and drawings, including this, and all data, notes and
other documents and instruments prepared by the design professional
as evidenced by the seal remain the property of the design professional.
The design professional shall retain all common law,
statutory and other reserved rights, including the copyright therein.



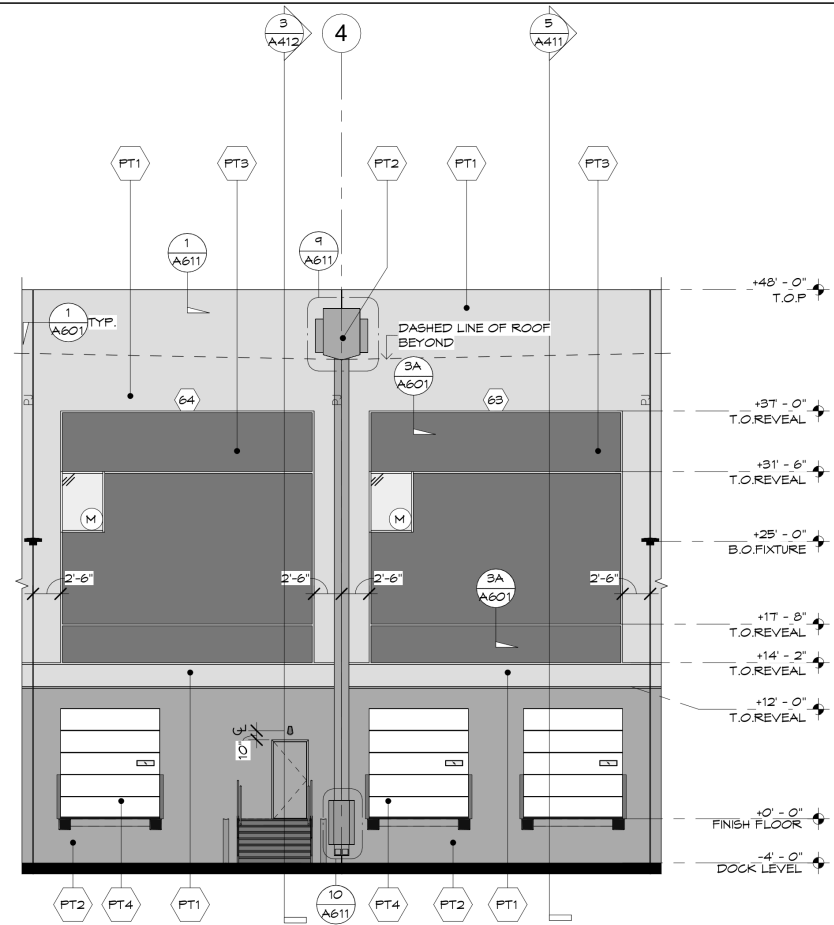
LAKIN INDUSTRIAL PARK
PHASE 4
GOODYEAR, ARIZONA

Current Submittal: BID SET
01/25/24

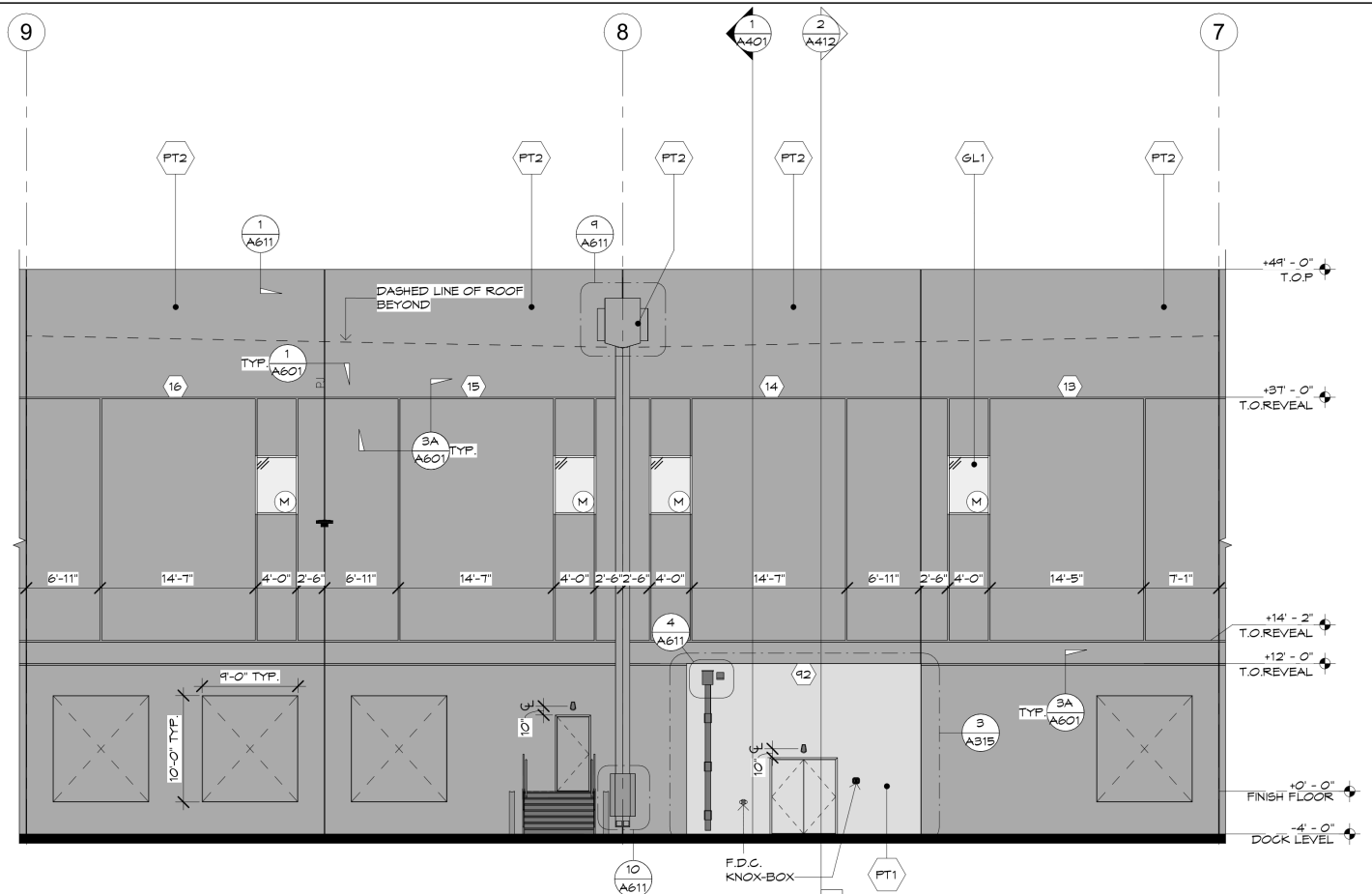
Revisions:

Project No.: 19116.450
Issue Date: 01/25/2024
Drawn By: ENJ/KD
Project Manager: TR
Title: ENLARGED ELEVATIONS

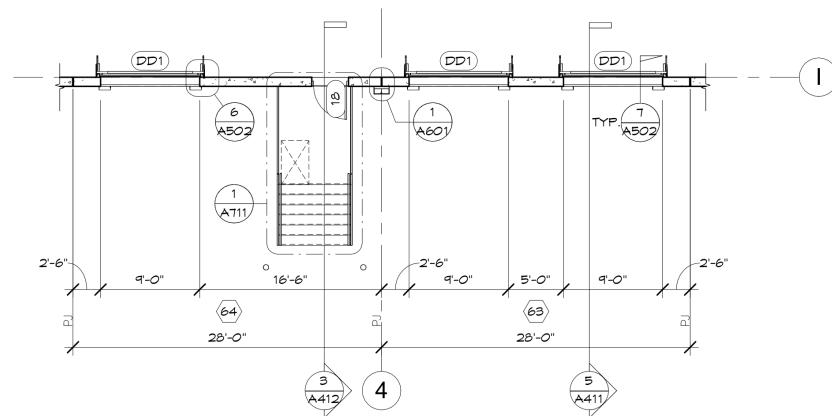
A313



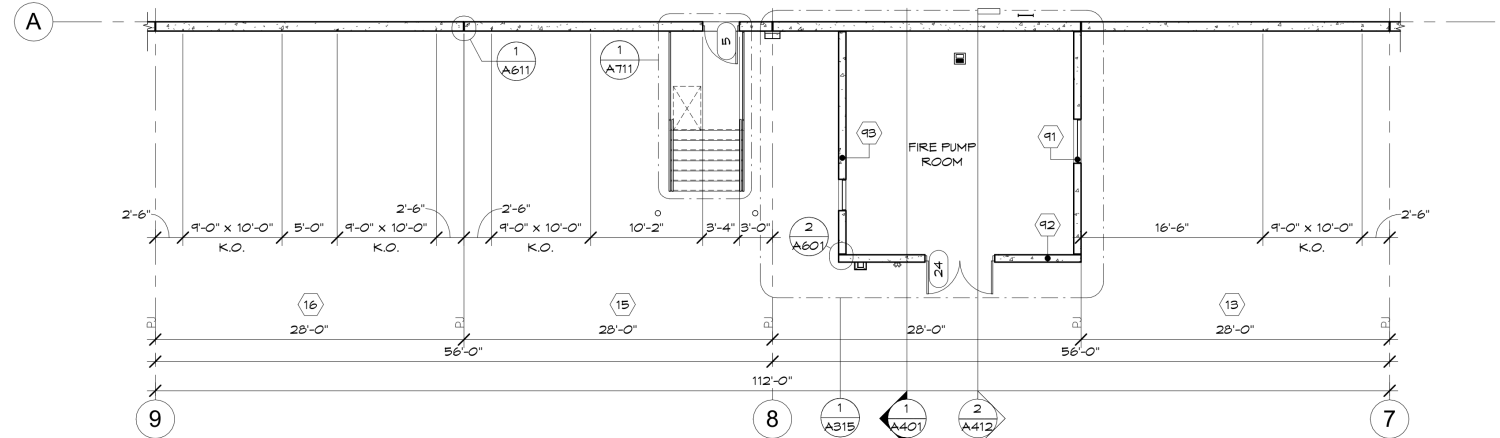
2A ENLARGED SOUTH ELEVATION
SCALE: 1/8" = 1'-0"



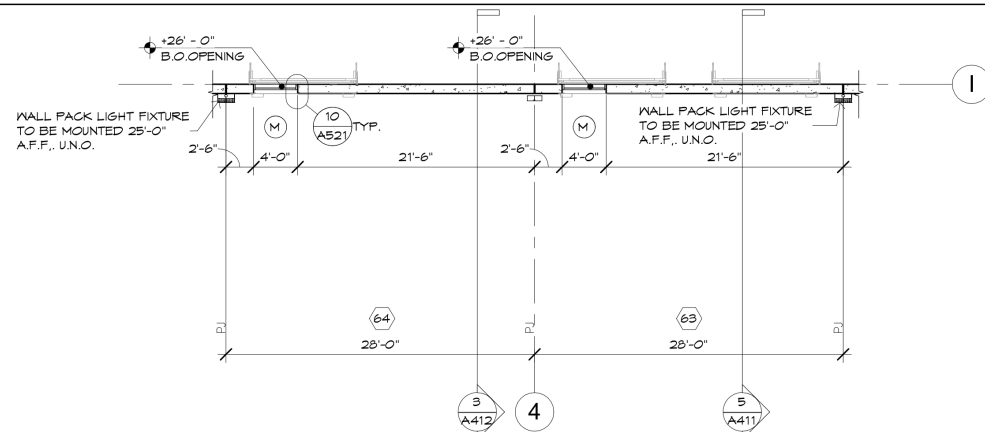
1A ENLARGED NORTH ELEVATION
SCALE: 1/8" = 1'-0"



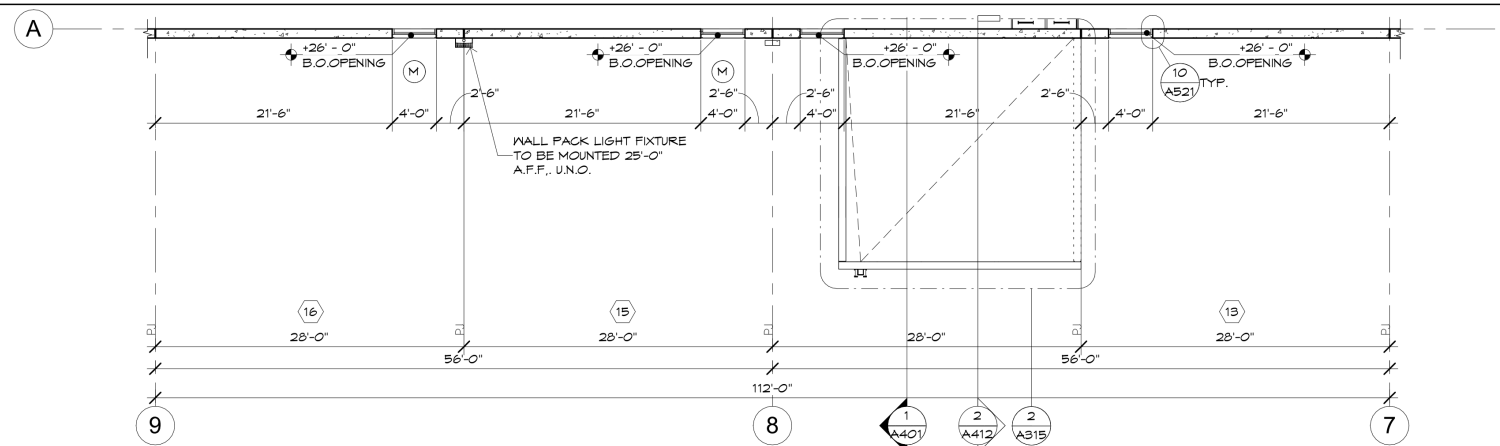
2B ENLARGED FLOOR PLAN
SCALE: 1/8" = 1'-0"



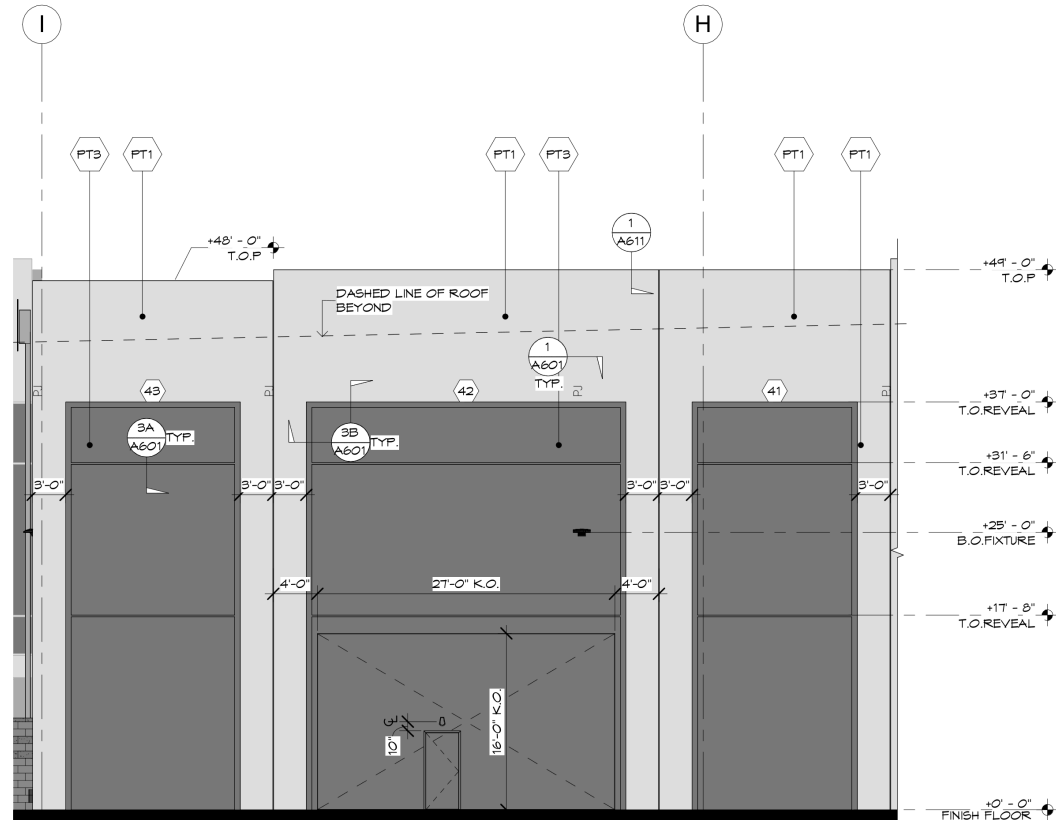
1B ENLARGED FLOOR PLAN
SCALE: 1/8" = 1'-0"



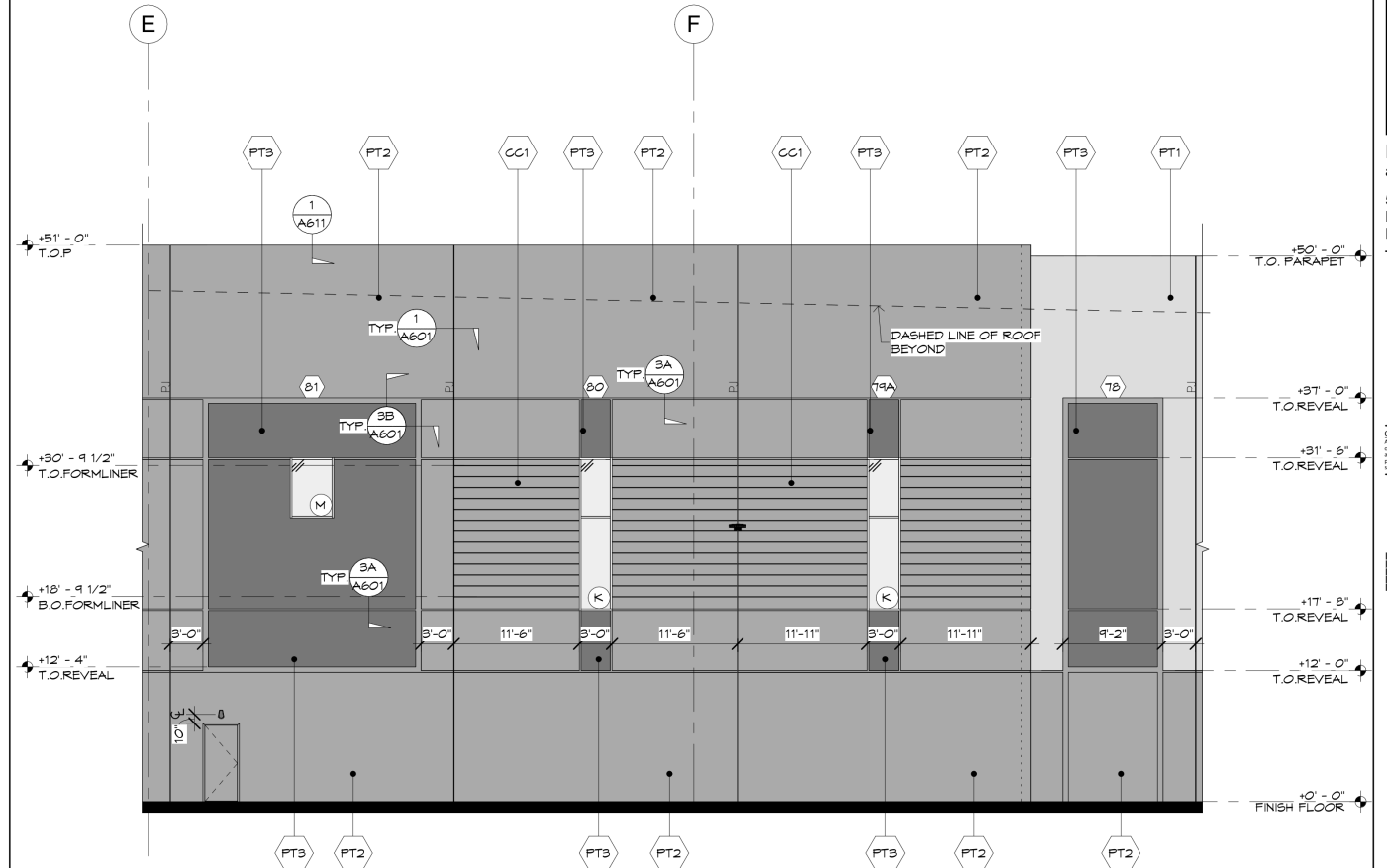
2C ENLARGED UPPER PLAN
SCALE: 1/8" = 1'-0"



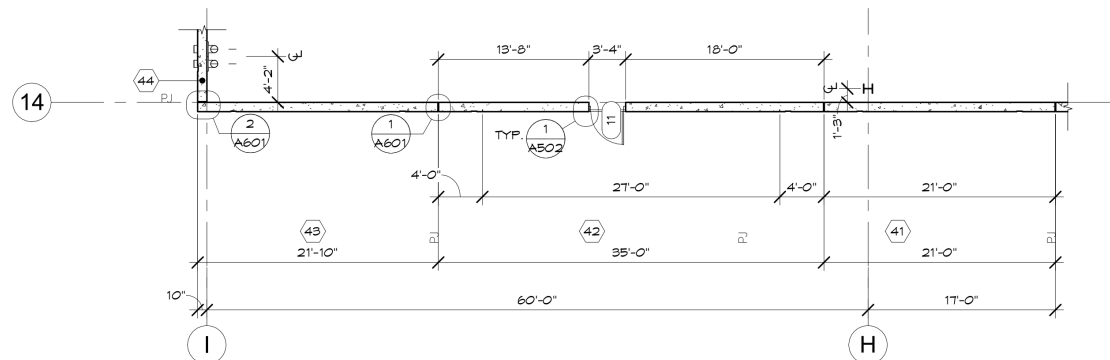
1C ENLARGED UPPER PLAN
SCALE: 1/8" = 1'-0"



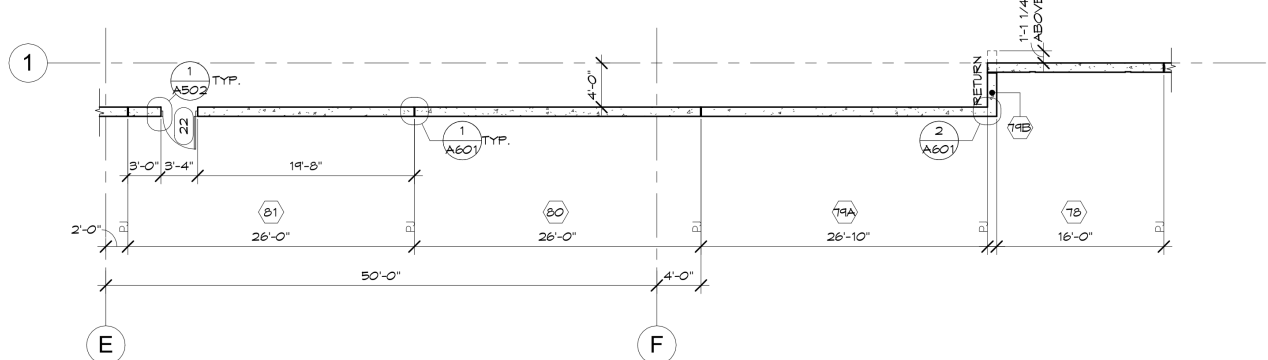
2A ENLARGED EAST ELEVATION
SCALE: 1/8" = 1'-0"



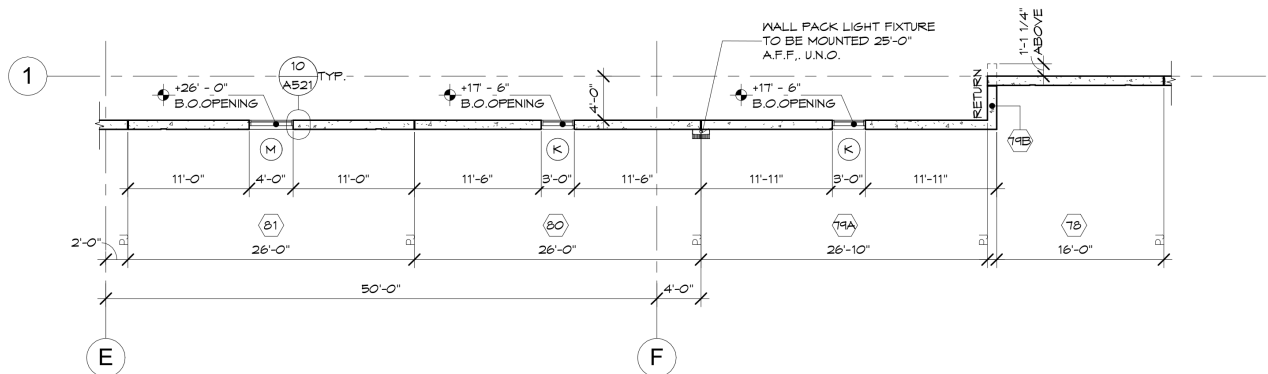
1A ENLARGED WEST ELEVATION
SCALE: 1/8" = 1'-0"



2B ENLARGED FLOOR PLAN
SCALE: 1/8" = 1'-0"

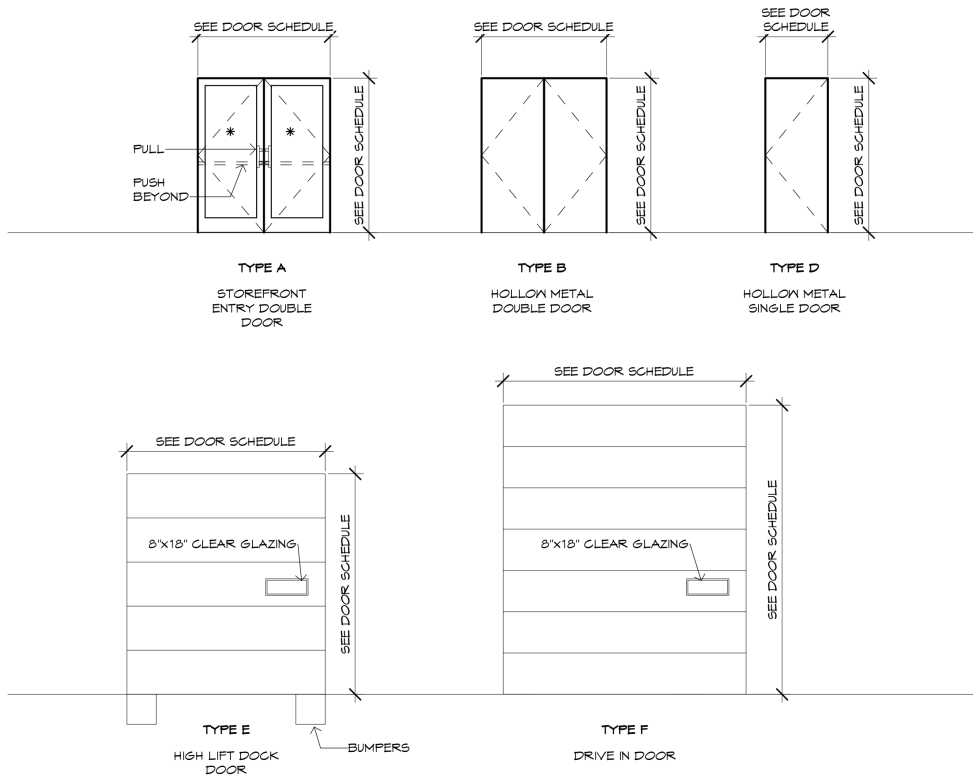


1B ENLARGED FLOOR PLAN
SCALE: 1/8" = 1'-0"

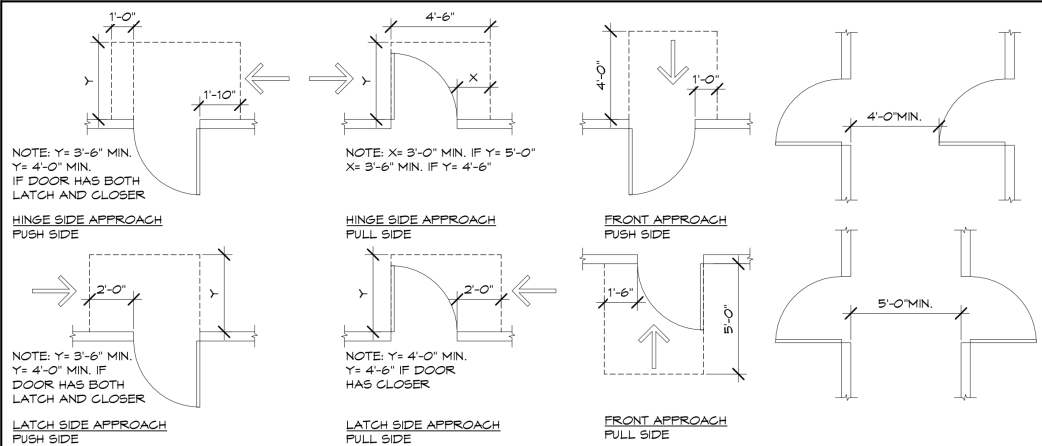
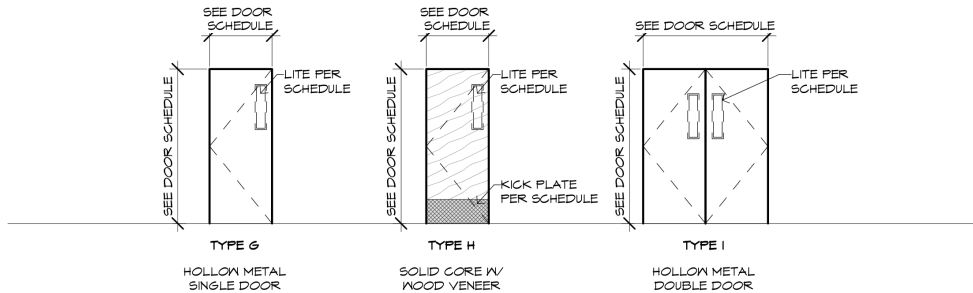


1C ENLARGED UPPER PLAN
SCALE: 1/8" = 1'-0"

EXTERIOR DOOR TYPE LEGEND



INTERIOR DOOR TYPE LEGEND

1 DOOR MANEUVERING CLEARANCES
SCALE: 1/4" = 1'-0"

DOOR SCHEDULE

DOOR INFORMATION				DOOR SIZE			MATERIAL		FINISH		DOOR DETAILS			COMMENTS
NO.	ROOM NAME	TYPE	HN #	HEIGHT	WIDTH	THICKNESS	PANEL	FRAME	PANEL	FRAME	HEAD	JAMB	SILL	
SHELL														
1	EXTERIOR ENTRANCE	A	1	8'-10"	5'-10"	1 3/4"	ALUMINUM	ALUMINUM	ANNODIZE	ANNODIZE	2A/A502	2A/A502	2B/A502	
2	EXTERIOR	D	4	7'-0"	3'-0"	1 3/4"	HOLLOW METAL	HOLLOW METAL	PAINT	PAINT	1A/A502	1A/A502	1B/A502	
3	EXTERIOR	D	4	7'-0"	3'-0"	1 3/4"	HOLLOW METAL	HOLLOW METAL	PAINT	PAINT	1A/A502	1A/A502	1B/A502	
4	EXTERIOR	D	4	7'-0"	3'-0"	1 3/4"	HOLLOW METAL	HOLLOW METAL	PAINT	PAINT	1A/A502	1A/A502	1B/A502	
5	EXTERIOR	D	4	7'-0"	3'-0"	1 3/4"	HOLLOW METAL	HOLLOW METAL	PAINT	PAINT	1A/A502	1A/A502	1B/A502	
6	EXTERIOR	D	4	7'-0"	3'-0"	1 3/4"	HOLLOW METAL	HOLLOW METAL	PAINT	PAINT	1A/A502	1A/A502	1B/A502	
7	EXTERIOR	D	4	7'-0"	3'-0"	1 3/4"	HOLLOW METAL	HOLLOW METAL	PAINT	PAINT	1A/A502	1A/A502	1B/A502	
8	EXTERIOR	D	4	7'-0"	3'-0"	1 3/4"	HOLLOW METAL	HOLLOW METAL	PAINT	PAINT	1A/A502	1A/A502	1B/A502	
9	EXTERIOR	D	4	7'-0"	3'-0"	1 3/4"	HOLLOW METAL	HOLLOW METAL	PAINT	PAINT	1A/A502	1A/A502	1B/A502	
10	EXTERIOR	D	4	7'-0"	3'-0"	1 3/4"	HOLLOW METAL	HOLLOW METAL	PAINT	PAINT	1A/A502	1A/A502	1B/A502	
11	EXTERIOR	D	4	7'-0"	3'-0"	1 3/4"	HOLLOW METAL	HOLLOW METAL	PAINT	PAINT	1A/A502	1A/A502	1B/A502	
12	EXTERIOR	D	4	7'-0"	3'-0"	1 3/4"	HOLLOW METAL	HOLLOW METAL	PAINT	PAINT	1A/A502	1A/A502	1B/A502	
13	EXTERIOR	D	4	7'-0"	3'-0"	1 3/4"	HOLLOW METAL	HOLLOW METAL	PAINT	PAINT	1A/A502	1A/A502	1B/A502	
14	EXTERIOR	D	4	7'-0"	3'-0"	1 3/4"	HOLLOW METAL	HOLLOW METAL	PAINT	PAINT	1A/A502	1A/A502	1B/A502	
15	WAREHOUSE VESTIBULE	D	2	7'-0"	3'-0"	1 3/4"	HOLLOW METAL	HOLLOW METAL	PAINT	PAINT	1A/A502	1A/A502	1B/A502	
16	EXTERIOR	D	4	7'-0"	3'-0"	1 3/4"	HOLLOW METAL	HOLLOW METAL	PAINT	PAINT	1A/A502	1A/A502	1B/A502	
17	EXTERIOR	D	4	7'-0"	3'-0"	1 3/4"	HOLLOW METAL	HOLLOW METAL	PAINT	PAINT	1A/A502	1A/A502	1B/A502	
18	EXTERIOR	D	4	7'-0"	3'-0"	1 3/4"	HOLLOW METAL	HOLLOW METAL	PAINT	PAINT	1A/A502	1A/A502	1B/A502	
19	EXTERIOR	D	4	7'-0"	3'-0"	1 3/4"	HOLLOW METAL	HOLLOW METAL	PAINT	PAINT	1A/A502	1A/A502	1B/A502	
21	EXTERIOR	D	4	7'-0"	3'-0"	1 3/4"	HOLLOW METAL	HOLLOW METAL	PAINT	PAINT	1A/A502	1A/A502	1B/A502	
22	EXTERIOR	D	4	7'-0"	3'-0"	1 3/4"	HOLLOW METAL	HOLLOW METAL	PAINT	PAINT	1A/A502	1A/A502	1B/A502	
23	EXTERIOR	D	4	7'-0"	3'-0"	1 3/4"	HOLLOW METAL	HOLLOW METAL	PAINT	PAINT	1A/A502	1A/A502	1B/A502	
24	FIRE PUMP ROOM	B	3	7'-0"	6'-0"	1 3/4"	HOLLOW METAL	HOLLOW METAL	PAINT	PAINT	2A/A501	2B/A501	2B/A501	PROVIDE KNOX BOX AT FIRE PUMP ROOM
25	EXTERIOR ENTRANCE	A	1	8'-0"	6'-0"	1 3/4"	ALUMINUM	ALUMINUM	ANNODIZE	ANNODIZE	2A/A502	2A/A502	2B/A502	
DD1	EXTERIOR	E	--	10'-0"	4'-0"	1 3/4"	METAL	METAL	MANF. FINSH	MANF. FINSH	--	6/A502	1/A502	
DD2	EXTERIOR	F	--	14'-0"	12'-0"	1 3/4"	METAL	METAL	MANF. FINSH	MANF. FINSH	--	5/A502	--	
100 - SHIPPING OFFICE														
101A	SHIPPING OFFICE	I	9	7'-0"	6'-0"	1 3/4"	HOLLOW METAL	HOLLOW METAL	PAINT	PAINT	2A/A501	2B/A501	2B/A501	
101B	SHIPPING OFFICE	G	10	7'-0"	3'-0"	1 3/4"	HOLLOW METAL	HOLLOW METAL	PAINT	PAINT	3A/A502	3A/A502	3B/A502	
102	OFFICE	H	11	7'-0"	3'-0"	1 3/4"	WOOD	HOLLOW METAL	PAINT	PAINT	4A/A502	4A/A502	4B/A502	
103	OFFICE	H	11	7'-0"	3'-0"	1 3/4"	WOOD	HOLLOW METAL	PAINT	PAINT	4A/A502	4A/A502	4B/A502	
104	OFFICE	H	11	7'-0"	3'-0"	1 3/4"	WOOD	HOLLOW METAL	PAINT	PAINT	4A/A502	4A/A502	4B/A502	
105	BREAK ROOM	G	5	7'-0"	3'-0"	1 3/4"	HOLLOW METAL	HOLLOW METAL	PAINT	PAINT	3A/A502	3A/A502	3B/A502	
106	MENS LOCKER RM	H	8	7'-0"	3'-0"	1 3/4"	WOOD	HOLLOW METAL	PAINT	PAINT	4A/A502	4A/A502	4B/A502	
108	MENS RESTROOM	H	8	7'-0"	3'-0"	1 3/4"	WOOD	HOLLOW METAL	PAINT	PAINT	4A/A502	4A/A502	4B/A502	
109	WOMENS LOCKER RM	H	8	7'-0"	3'-0"	1 3/4"	WOOD	HOLLOW METAL	PAINT	PAINT	4A/A502	4A/A502	4B/A502	
110	JANITOR ROOM	H	7	7'-0"	3'-0"	1 3/4"	WOOD	HOLLOW METAL	PAINT	PAINT	4A/A502	4A/A502	4B/A502	
111	SERVER	H	12	7'-0"	3'-0"	1 3/4"	WOOD	HOLLOW METAL	PAINT	PAINT	4A/A502	4A/A502	4B/A502	
120 - CONTRACTOR PICK-UP														
120A	CONTRACTOR PICK-UP	I	9	7'-0"	6'-0"	1 3/4"	HOLLOW METAL	HOLLOW METAL	PAINT	PAINT	2A/A501	2B/A501	2B/A501	
120B	CONTRACTOR PICK-UP	I	9	7'-0"	6'-0"	1 3/4"	HOLLOW METAL	HOLLOW METAL	PAINT	PAINT	2A/A501	2B/A501	2B/A501	
121	RESTROOM	H	6	7'-0"	3'-0"	1 3/4"	WOOD	HOLLOW METAL	PAINT	PAINT	4A/A502	4A/A502	4B/A502	
122	RESTROOM	H	6	7'-0"	3'-0"	1 3/4"	WOOD	HOLLOW METAL	PAINT	PAINT	4A/A502	4A/A502	4B/A502	
123	OFFICE	H	11	7'-0"	3'-0"	1 3/4"	WOOD	HOLLOW METAL	PAINT	PAINT	4A/A502	4A/A502	4B/A502	
130 - RECEIVING OFFICE														
130	RECEIVING OFFICE	H	10	7'-0"	3'-0"	1 3/4"	WOOD	HOLLOW METAL	PAINT	PAINT	4A/A502	4A/A502	4B/A502	
131	MENS RESTROOM	H	6	7'-0"	3'-0"	1 3/4"	WOOD	HOLLOW METAL	PAINT	PAINT	4A/A502	4A/A502	4B/A502	
132	WOMENS RESTROOM	H	6	7'-0"	3'-0"	1 3/4"	WOOD	HOLLOW METAL	PAINT	PAINT	4A/A502	4A/A502	4B/A502	
133	RESTROOM	H	6	7'-0"	3'-0"	1 3/4"	WOOD	HOLLOW METAL	PAINT	PAINT	4A/A502	4A/A502	4B/A502	
134	VESTIBULE	H	13	7'-0"	3'-0"	1 3/4"	WOOD	HOLLOW METAL	PAINT	PAINT	4A/A502	4A/A502	4B/A502	
135	ELECTRICAL	H	12	7'-0"	3'-0"	1 3/4"	WOOD	HOLLOW METAL	PAINT	PAINT	4A/A502	4A/A502	4B/A502	
140 - REMOTE RESTROOM														
140	RESTROOM	H	6	7'-0"	3'-0"	1 3/4"	WOOD	HOLLOW METAL	PAINT	PAINT	4A/A502	4A/A502	4B/A502	
141	RESTROOM	H	6	7'-0"	3'-0"	1 3/4"	WOOD	HOLLOW METAL	PAINT	PAINT	4A/A502	4A/A502	4B/A502	

HARDWARE SETS

HARDWARE SET #7 JANITOR			HARDWARE SET #1 ALUM ENTRANCE (PAIR)		
3	EA	BUTTS 4.5 X 4.5	2	EA	CONTINUOUS HINGE
1	EA	STOREROOM LOCK	1	EA	CYLINDER CORE
1	EA	THRESHOLD 36"	1	EA	HOOK BOLT LOCK
2	EA	MOP PLATE	2	EA	PUSH-PULL SET
1	EA	WALL STOP	2	EA	SURFACE CLOSER
HARDWARE SET #8 LOCKER RESTROOMS			2	EA	DOOR BOTTOM SWEEP
3	EA	BUTTS 4.5 X 4.5	1	EA	"DOOR TO REMAIN UNLOCKED" SIGN
2	EA	PUSH PULL PLATE	1	EA	THRESHOLD
1	EA	OFF-SET PULLS	HARDWARE SET #2 EXTERIOR VESTIBULE ENTRANCE		
1	EA	CLOSER	3	EA	BUTTS 4.5 X 4.5 NRP
2	EA	KICK PLATE	1	EA	CLOSER STOP
1	EA	FLOOR STOP	1	EA	PANIC-BAR EXIT
HARDWARE SET #4 OFFICE TO WAREHOUSE (PAIR)			1	EA	RIM CYLINDER
6	EA	BUTTS 4.5 X 4.5 NRP	1	EA	CARD READER
1	EA	OFFICE LOCK	1	EA	ELECTRIC STRIKE
1	EA	AUTO FLUSH BOLTS	1	EA	DOOR POSITION SWITCH
1	EA	DUST PROOF STRIKE	1	EA	DOOR SEALS
2	EA	COORDINATOR	1	EA	SWEEP
2	EA	CLOSER W/ STOP	1	EA	THRESHOLD
2	EA	SWEEP	1	EA	RAIN DRIP
1	EA	THRESHOLD	1	EA	DOOR VIEWER
1	EA	ASTRASAL SET	HARDWARE SET #3 FIRE-PUMP ROOM		
HARDWARE SET #10 OFFICE TO WAREHOUSE			6	EA	BUTTS 4.5 X 4.5 NRP
3	EA	BUTTS 4.5 X 4.5 NRP	2	EA	CLOSER
1	EA	OFFICE LOCK	1	EA	STOREROOM LOCK
1	EA	CLOSER	1	EA	DUSTPROOF STRIKE
1	EA	SWEEP	1	EA	CYLINDER CORE
1	EA	THRESHOLD	1	EA	CYLINDER CORE
1	EA	WALL STOP	1	EA	OVERHEAD COORDINATOR & BRACKET
HARDWARE SET #11 OFFICE			2	EA	DOOR SWEEPS
3	EA	BUTTS 4.5 X 4.5 NRP	1	EA	THRESHOLD
1	EA	OFFICE LOCK	1	EA	DOOR SEAL
1	EA	CLOSER	1	EA	ASTRASAL
1	EA	WALL STOP	1	EA	RAIN DRIP
HARDWARE SET #12 ELECTRICAL ROOM			HARDWARE SET #4 WAREHOUSE EXIT		
3	EA	BUTTS 4.5 X 4.5 NRP	3	EA	BUTTS 4.5 X 4.5 NRP
1	EA	STOREROOM LOCK	1	EA	CLOSER STOP
1	EA	CLOSER	1	EA	PANIC-BAR EXIT
1	EA	DOOR SEAL	1	EA	RIM CYLINDER
1	EA	WALL STOP	1	EA	CYLINDER CORE
HARDWARE SET #13 WAREHOUSE VESTIBULE			1	EA	DOOR SEALS
3	EA	BUTTS 4.5 X 4.5 NRP	1	EA	DOOR SEALS
1	EA	CLOSER STOP	1	EA	SWEEP
1	EA	PANIC-BAR EXIT	1	EA	THRESHOLD
1	EA	RIM CYLINDER	1	EA	RAIN DRIP
1	EA	CARD READER	1	EA	DOOR VIEWER
1	EA	ELECTRIC STRIKE	HARDWARE SET #5 BREAKROOM		
1	EA	DOOR POSITION SWITCH	3	EA	BUTTS 4.5 X 4.5 NRP
1	EA	DOOR SEALS	1	EA	PASSAGE SET
1	EA	SWEEP	1	EA	WALL STOP
1	EA	DOOR VIEWER	HARDWARE SET #6 RESTROOM		
			3	EA	BUTTS 4.5 X 4.5
			1	EA	PRIVACY LOCK
			1	EA	CLOSER
			2	EA	KICK PLATE 10" X 34"
			1	EA	WALL STOP
			1	EA	FLOOR TILE THRESHOLD

GENERAL DOOR NOTES

- EGRESS DOORS SHALL SWING IN THE DIRECTION OF EGRESS TRAVEL WHERE SERVING AN OCCUPANT LOAD OF 50 OR MORE AND SHALL BE READILY OPERABLE FROM THE EGRESS SIDE WITHOUT THE USE OF A KEY, SPECIAL KNOWLEDGE, OR EFFORT.
- DOOR OPERATING HARDWARE SHALL BE INSTALLED BETWEEN 34 INCHES MINIMUM AND 48 INCHES MAXIMUM ABOVE FINISH FLOOR.
- PROVIDE MAXIMUM 1/2 INCH HIGH ALUMINUM DOOR THRESHOLDS AT ALL EXTERIOR DOORS. (ADAAG 404.2.5)
- ALL-GLASS DOORS SHALL BE PROVIDED WITH TEMPERED SAFETY GLAZING MATCHING ADJACENT WINDOW GLASS, U.N.O.
- SWINGING DOOR AND GATE SURFACES WITHIN 10 INCHES OF THE FLOOR SHALL HAVE A SMOOTH SURFACE ON THE PUSH SIDE OF THE DOOR EXTENDING THE FULL WIDTH OF THE DOOR. TEMPERED ALL-GLASS DOORS WITH THE TOP EDGE OF THE BOTTOM RAIL TAPERED AT 60 DEGREES MINIMUM FROM HORIZONTAL ARE EXEMPT. (ADAAG 404.2.10)
- PROVIDE DOOR CLOSER AT ALL EXTERIOR DOORS, PER PROJECT MANUAL SECTION 081100.
- PROVIDE MAXIMUM OPENING FORCE OF 5 LBF AT INTERIOR DOORS, AND 10 LBF AT EXTERIOR DOORS.
- PAINT ALL HOLLOW METAL DOORS AND FRAMES TO MATCH ADJACENT WALL COLOR, U.N.O.
- KEYING REQUIREMENTS PER PROJECT MANUAL SECTION 081100.



Butler Design Group Inc.
architects & planners

5013 East Washington St. #100
Phoenix, Arizona 85034
Phone 602-957-1800

PRELIMINARY
NOT FOR
CONSTRUCTION

OWNERSHIP OF INSTRUMENTS OF SERVICE
All reports, plans, specifications, contracts, bills, field data, notes and other documents and any data relating to the property of the professional as evidenced by the seal and signature of the professional shall remain the property of the professional. The design professional shall retain all copyright law, liability and other reserved rights, including the copyright therein.

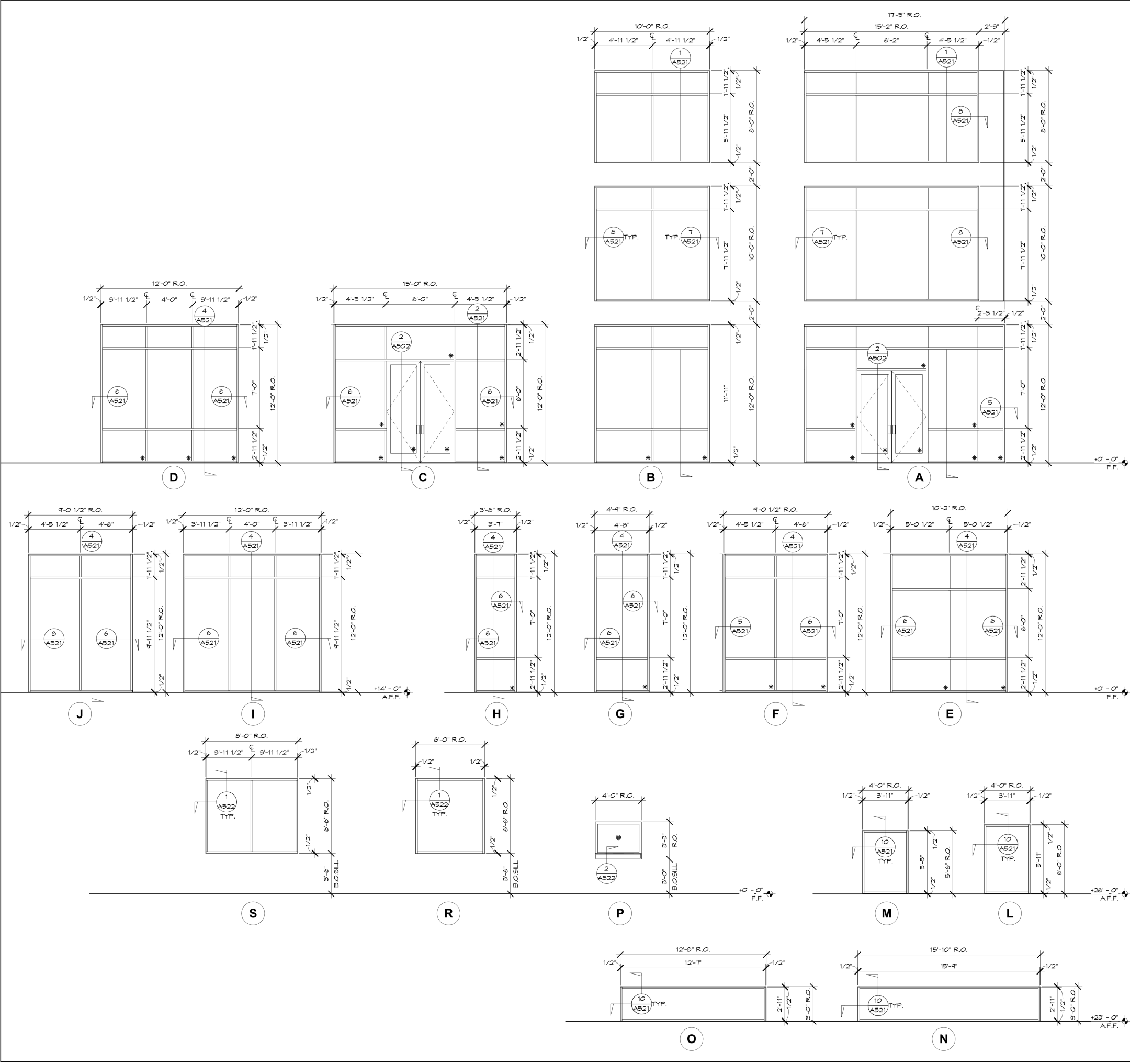


LAKIN INDUSTRIAL PARK
PHASE 4
GOODYEAR, ARIZONA

Current Submittal: BID SET
01/25/24
Revisions:

Project No.: 19116.450
Issue Date: 01/25/2024
Drawn By: EN
Project Manager: TR
Title: DOOR TYPES AND SCHEDULE

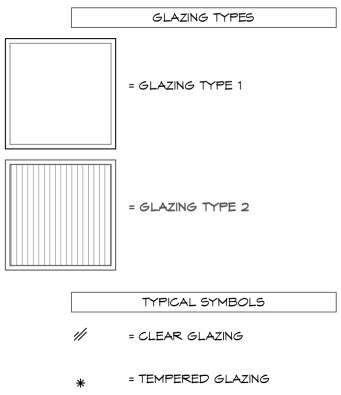
A501



GENERAL WINDOW NOTES

- SEE FLOOR PLANS OR ELEVATIONS FOR LOCATIONS OF WINDOW TYPES
- ALL WINDOW TYPES INDICATED ARE AS VIEWED FROM THE EXTERIOR OF THE BUILDING OR EXTERIOR SIDE OF A ROOM.
- SEE WINDOW ELEVATIONS FOR JAMB, SILL AND HEAD DETAIL REFERENCES.
- SEE DOOR SCHEDULE FOR DOOR TYPES INDICATED ON WINDOW ELEVATIONS.
- VISION GLASS SHALL BE 1-INCH DUAL-PANE INSULATING UNITS. SEE PROJECT MANUAL FOR CHARACTERISTICS OF EACH GLAZING AND FRAMING TYPE.
- ALL SAFETY GLAZINGS (INDICATED WITH AN ASTERISK *) SHALL COMPLY WITH ANSI Z97.1-2015 AND CPSC 16 CFR 1201 WHERE SUBJECT TO HUMAN IMPACT LOADS. GLAZING MANUFACTURER SHALL PROVIDE SAFETY GLAZING IDENTIFICATION MARK ON EACH LITE OF GLASS WHERE REQUIRED BY CODE.
 - ALL GLAZING WITHIN 24 INCHES OF A DOOR JAMB AND LESS THAN 60 INCHES ABOVE AN ADJACENT WALKING SURFACE SHALL BE TEMPERED SAFETY GLAZING.
 - ALL GLAZING ADJACENT TO WALKING SURFACES THAT ARE LESS THAN 36 INCHES AWAY FROM THE GLASS AND LESS THAN 18 INCHES ABOVE THE WALKING SURFACE SHALL BE TEMPERED SAFETY GLAZING.
 - GLAZING CONTRACTOR SHALL SUBMIT GLAZING SHOP DRAWINGS FOR REVIEW AND APPROVAL OF ALL SAFETY GLAZING LOCATIONS WHETHER INDICATED HEREIN OR NOT.
- GLAZING CONTRACTOR SHALL FIELD VERIFY ALL WINDOW OPENING DIMENSIONS PRIOR TO FABRICATION OF GLASS UNITS AND WINDOW FRAMING. PROVIDE MINIMUM 1/2-INCH PERIMETER JOINT SEALANT AT ALL WINDOW OPENINGS.
- PROVIDE A WEATHERPROOF ASSEMBLY WITH MISCELLANEOUS METAL FLASHING THAT MATCH WINDOW FRAME FINISH.
- PROVIDE ADDITIONAL STEEL REINFORCEMENT WITHIN VERTICAL MULLION FRAMING WHERE REQUIRED TO MEET MINIMUM WIND-LOAD REQUIREMENTS.
- AT ALL VERTICAL BUTT JOINT LOCATIONS, USE A STRUCTURAL SILICONE SEALANT(DOWN CORNING OR EQUAL). SEE PROJECT MANUAL FOR ADDITIONAL DATA.

WINDOW LEGEND



Butler Design Group Inc.
architects & planners
5013 East Washington St. #100
Phoenix, Arizona 85034
Phone 602-957-1800



OWNERSHIP OF INSTRUMENTS OF SERVICE
All reports, plans, specifications, drawings, files, field data, notes and other documents and instruments prepared by the design professional as part of the project shall remain the property of the design professional. The design professional shall retain all copyright law, trademark and other reserved rights, including the copyright therein.



LAKIN INDUSTRIAL PARK
PHASE 4
GOODYEAR, ARIZONA

Current Submittal: BID SET
Revisions: 01/25/24

Project No.: 19116.450
Issue Date: 01/25/2024
Drawn By: EN | KD
Project Manager: TR
Title: CURTAIN WALL AND WINDOW TYPES

A511